

Burn

729AM 87.9FM
92.3FM

Positively

February 2026

MĀNIATOTO!



Your Calendar
Pages 14 & 15



**MĀNIATOTO
WHAT'S ON**

FROM THE EDITOR'S DESK

Expectation and realisation are lessons we start learning at a very young age.

Let's be honest. When children beg for a Kinder Surprise egg, it is never really about the chocolate. The real excitement is the surprise toy hidden inside. The expectation is strong that it will be the one they have been hoping for. In our household, that usually means Skye from Paw Patrol. There is genuine anticipation as the foil comes off and the chocolate cracks open.

Then comes the moment of realisation. Because it is a random mix, the toy inside might already live in the toy box. It might not be their favourite character. Sometimes it is exactly the one a sibling wanted instead. That hopeful excitement can turn into a beaming smile, or a slightly trembling lip, a disappointed look, and the innocent question of why they did not get the toy they were wishing for.

That little Kinder Surprise egg is actually a pretty good reflection of adult life. We often go into situations with clear expectations about what we want to achieve, receive, or experience. The reality is that the outcome can be completely unknown until the moment arrives. Just like opening the egg, you never truly know what you are going to get, but that uncertainty should never stop us from giving things a go.

As we move into 2026, many of us will have set New Year resolutions or personal goals. Some will unfold exactly as hoped. Others may look a little different by the end of the year. What matters most is the willingness to try, to adapt, and to keep opening the egg with optimism.

For the Positively Māniatoto team, our expectation for the year ahead is simple. We want to continue sharing upcoming events, celebrations, and the great community stories that make our area such a special place. You can help us achieve this by sending in information, photos, and stories for us to share.

We were going to end with a joke about a surprise egg, but we were worried the punchline might get a little scrambled.

Take care of one another, keep supporting your goals, and enjoy the surprises along the way.

Erica and James.

Front cover image:

Bright yellow ducks race down the Naseby Water Race as crowds line the banks for this New Year's Eve tradition. Laughter, cheers, and competition filled the day. Turn to page 4 for the full story. Image captured by Keryn and Brent Goodsir.

MANIOTOTO COMMUNITY UNITES FOR CLIP FOR A CAUSE

Written by: Erica

We caught up with Scott Armstrong, one of the organisers of Clip for a Cause, the day after the shearing shed doors closed on an event that brought the Maniototo community together in support of the Kirk family.

Clip for a Cause was a 24-hour

shearing fundraiser held in Wedderburn to support the Kirk family after Murray Kirk was diagnosed with a terminal brain tumour. The event was organised by Scott Armstrong and Paddy Henderson, both of whom had previously worked alongside Murray. Volunteer shearers and contractors donated their time and skills to shear around 8,500 lambs at Sandy Sutherland's woolshed, with all proceeds going directly to the Kirk family.

Scott said the scale of support was significant, with people travelling considerable distances to be involved. One shearer travelled from Wagga Wagga in Australia specifically to take part and show support for Murray and his wife.

The day after the shearing was completed, Scott said everyone involved was feeling very good and found the experience extremely satisfying. He said it brought a large number of people together for a really good cause. Having grown up with Murray's wife and having been in business with Murray for around ten years, Scott said being part of the event meant a great deal to him personally and he was



CLIP FOR A CAUSE

Donations welcome:
Westpac: 03-1395-0239458-002
Account Holder: Trina Armstrong

24 hours of shearing to raise money for the Kirk family



— THE —
COUNTRY
WITH JAMIE MACKAY

WEEKDAYS 12-1PM
Listen on BURN RADIO

very proud of what was achieved.

What stood out most for Scott was the way everyone worked together. Despite the weather not being on their side at times, he said everyone had a job and everyone did it.

From a practical perspective, the woolshed handled the volume well and was back to normal after a thorough clean up the following day. Long hours were supported by generous catering from women around the district, with plenty of food available and a coffee machine that was in constant use.

Scott said shearing through the night went smoothly, with no noticeable change in the lambs once night set in. In reflecting on the event, he thanked everyone who supported Clip for a Cause, including those who shored sheep, worked as rousies, drove trucks, cooked meals, donated, or helped in any way. He said the level of support was unbelievable and described the event as a very satisfying couple of days for all involved.

 **Jacqui Henderson is with Paddy Henderson.** 2 days ago · 🌐

Because I am not there today I just wanted to say a wee thing - Hi everyone. For those of you who don't know me, I'm Jacqui, Paddy & Shaz's daughter.

I just wanted to say a few words on behalf of our family. Growing up, I've heard so many stories about Kirky- not just starting as part of Dad's gang when he was only 14, but as a mate, and someone who stood beside dad and the crew as the years went on. That bond has clearly lasted a lifetime.

Seeing what's been organised here today and the people who've come from everywhere to be part of it honestly says everything about the respect people have for you, Kirky, and for Dad & the Armstrongs and for the shearing community. I'm incredibly proud of dad, the Armstrongs, and everyone involved for pulling together a 24-hour shear-a-thon like this. It's no small thing.

The fact that the final run of sheep will be shorn by the original gang that Dad and Kirky first shored with makes this even more special. It feels like a full circle moment - friendship, beers, loyalty, did I say beers, and standing by each other when it matters most.

Thank you all for showing up, for giving your time and energy, and for showing Kirky just how much he means to so many people.

❤️❤️❤️

 **Greta Mason** a day ago · 🌐

From the bottom of my heart, thank you to every single person who supported Kirky, Liz and the kids through the 24hr Clip for a Cause. The sheer number of people who turned out was nothing short of incredible.


To those who were the true nuts and bolts of this 24hr shearathon — I won't mention individuals, contractors, companies or sponsors for fear of missing someone, but you know who you are. Please know how incredibly grateful and humbled I am for what you gave, whether it was time, effort, resources, items for auction, or quiet support behind the scenes.

What a truly special community of people you are. There is nothing that compares to the rural and shearing communities — the heart, the grit, and the way everyone shows up for one another.

Thank you all so very much. You're awesome, every single one of you

👍👍👍 40



 **Sue Kirk** a day ago · 🌐

Thank you to every one of you lovely people who turned up to give support to our son Kirky and his family at the shearing marathon, we are truly humbled by the effort and time so many people gave, thanks again, Sue and Peter

👍👍👍 32



BURN RADIO UPDATE



From the Studio to the Community – Staying Tuned and Switched On 729am or 92.3fm (New frequency)

Throughout 2026, we're excited to keep building on what we do best. This includes supporting local events, sharing important community information, and being there when it matters most.

We are always keen to hear from people who would like to get involved or support local radio in any way.

If you'd like to get in touch, volunteer, advertise, or find out more about Burn Radio, email us anytime at burn729am@gmail.com

Written by: James Valentine

DUCKS ON THE MOVE AT NASEBY WATER RACE

Written by: Erica

The Great Naseby Duck Race returned to the Naseby Water Race on Wednesday 31 December 2025, bringing together families, locals, and holidaymakers for a fun-filled end to the year.



Held at the top of Swimming Dam Road in the water race from 11am through to midday, the event once again proved to be a summer highlight, with hundreds of bright yellow ducks taking to the water amid plenty of cheering, laughter, and friendly competition.

The Duck Race is believed to have first started around 20 years ago, before pausing for a period. Current organisers Brent and Keryn Goodsir have been running the event for the past three years, picking it up again after COVID when they wanted to see the tradition continue for other families to enjoy, just as their own children once had. Since then, the event has continued to grow, with more ducks added each year to meet demand.

The flow of the Naseby Water Race can change from year to year depending on weather conditions. This year the water level was at a reasonable height, providing good racing conditions, although slightly slower than the previous year.

Ducks are raced in age group categories, with different sized ducks used for each group. Smaller ducks are used for the youngest participants, medium sized ducks for older children, and larger ducks for teenagers and adults. Ducks are released at different times so everyone can take part safely. Participants follow their ducks along the water race, helping free them from the rushes if they become stuck, but without pushing them forward.

With hundreds of ducks in the water and around 15 volunteers helping on the day, the event ran smoothly, finishing with prize giving at the pub by midday. Spot prizes, along with first, second, third and last place prizes in each category, kept excitement high and helped make the day memorable.


The Naseby Duck Race is held every year on 31 December, and planning is already underway for the next event.



magpie & scout

TILER
Available for quality small projects
Experienced
Detail-oriented
Reliable

Sarah Anderson
hello@magpieandscout.co.nz
www.magpieandscout.co.nz
022 500 5255

EST.  1862

DANSEYS PASS

HOTEL

What's on your mind for dinner tonight?

DANSEYS PASS DINING ROOM

Open Wednesday to Sunday from 5.30pm
Booking required
bookings@danseypass.co.nz or 444-9048

It's just a few weeks until the A&P Association host Maniototo's 125th Anniversary Show, on Wednesday 18 February. Another action packed day is planned, and there will be something for everyone. There will be free entertainment for children, plenty of retail stalls, some delicious snacks to try, and a return of fabulous toe tapping live music.

Many of our local agricultural businesses will have their gear on display, and enjoy having the opportunity to thank you for your support, so stop by their stands for a chat.

Of course none of this could happen without the continued support from our wonderful generous sponsors. We sincerely thank you all – your support buys something we would otherwise have to purchase, and we would struggle to run this show without you.

There is still plenty of time to get your entries in, including fleece wool, sheep, equestrian, and horticultural and industrial divisions in the stadium. The schedules for wool, sheep and equestrian can be found online at <https://showday.online/show/Maniototo>, where you can also place your entries. The theme for the horticultural and industrial divisions is 'Celebrations', and the full schedule can be found on our Facebook page, Maniototo A&P Association.

We are running the gift lamb competition again this year, with the proceeds going to Maniototo Health Services for the extension on the hospital. If you would like to donate lambs, and have not been contacted yet, please call Johnny Girvan on 0274730836, and he'll arrange for the Young Farmers to pick them up. All lambs will be tagged on collection, and all tags go in the draw for a great prize (due to current market value each donated lamb will get two tag numbers for the draw). If you do not have lambs to donate you can contribute by purchasing a tag for \$100 + GST, and still be eligible for the prize. This is open to all people, organisations and businesses who would like to support the local health services. Please email maniototoshow@gmail.com to purchase your tag.

Important dates:

Wednesday 11 February, entries close for Wool, Sheep and Equestrian.

Sunday 15 February, entries close for the Horticultural and Industrial Divisions at 6pm.

Monday 16 February, fleece wool must be delivered to the stadium by 9am.

Flower show entries will be accepted up to 6pm on Monday 16 February.

Contacts:

Jo Paterson, secretary of Horticultural and Industrial Divisions, 0276011100, maniototoshow.industry.hort@gmail.com

Janine Smith, secretary of sheep, equestrian, wool, trade, sponsors and memberships, 02102554626,
maniototoshow@gmail.com

Please do not hesitate to contact us if you are interested in entering **or helping** in any of these areas.

On the day:

Equestrian events begin at 8am.

Sheep must be penned by 8:30am.

Stadium opens at 10am.

Presentation of trophies for sheep & wool at 12:30pm, at the sheep pens.

Central Otago Junior Judging, 12:45pm, at the sheep pens.

Grand Parade 1pm, followed by Pet Parade.

Jack Russell race 1:45pm.

Agri kids 2:30pm.

Presentation of trophies for Horticultural and Industrial Divisions at 4pm, in the stadium.

2026 SCHOLARSHIP WINNER LUCY FALCONER

SOURCE: Jane Falconer
PHOTO CREDIT: Central Otago A&P FB



Lucy Falconer has been named the Central Otago A and P Association 2026 Scholarship winner, an achievement that reflects both her dedication and her strong connection to the Mānīatoto.

Lucy grew up in the Mānīatoto on a deer farm and has spent her life around horses. With a strong interest in animals and science, she is heading to Massey University to

study a Bachelor of Animal Science, specialising in equine studies. Her particular interest lies in equine science and the research being carried out on high performance horses. As a competitive equestrian, Lucy is especially interested in understanding how intensive performance affects horses physically, and how training and management practices can be improved to reduce impact without compromising performance. She believes this research will also benefit working and recreational horses.

In her second year at university, Lucy hopes to take part in an overseas exchange programme. With access to nearly 400 partner universities worldwide, she is particularly interested in studying in either the United States or the Netherlands, both recognised for their strength in animal and equine science.

Lucy's achievement carries special meaning for her family. Her grandmother, Jane Falconer, developed the Clachanburn Country Garden over a period of 40 years. In 2006, the garden was recognised as a Garden of National Significance by the New Zealand Garden Trust.

When Lucy was diagnosed with leukaemia in 2012 at the age of four, she underwent two years of treatment in Christchurch, during which time her family stayed at Ranui House. During this period, Jane began work on developing Lucy's Rose, with support from Tasman Bay Rose Nursery and the Maniototo Lions Club. The project raised \$40,000 for Ranui House.

As a family, they remain very appreciative of the community's continued support for Lucy.

Visitors to the 125th Maniototo A and P Show on 18 February 2026 will be able to see Lucy's Rose in the Roses section.

Congratulations to Lucy on winning the 2026 scholarship. We wish her every success with her studies and look forward to following her journey in the years ahead.



"Great news for Ranfurly! The new Ranfurly Water Treatment Plant was successfully commissioned last week and is now up and running. A big thank you to our community for pulling together and conserving water while the work was underway. Your support, patience, and teamwork helped make this milestone possible, and we really appreciate everyone doing their part."





MANIOTOTO GARDEN CLUB

New members are always welcome.

**Email: maniototogc@gmail.com or
text 021 0252 0116**

Show Ready! Thursday 5 February, 7.30pm

Preparing your best for the **125th Maniototo A and P Show on 18 February**, this meeting is all about perfecting your presentation of garden vegetables, flowers, and produce for show judging.

Whether you are a seasoned exhibitor or a curious newcomer, join us to learn:

- Expert tips and tricks for selecting and displaying your garden's bounty
- What judges look for in top-tier entries
- Examples of winning presentations and how to avoid common pitfalls
- An opportunity to ask questions and share experiences with fellow garden enthusiasts

Let's make this year's A and P Show your best yet! Experienced speakers will be joining us this evening.



MANIOTOTO GARDEN CLUB OPEN GARDEN TOUR SUCCESS

The Maniototo Garden Club Open Garden Tour proved to be a standout success, with Secretary Denise Baddock describing the day as magnificent. Held in ideal summer conditions, the weather certainly played its part, with sunshine and temperatures sitting around 22 to 23 degrees, making it perfect for visitors to explore the nine featured gardens around Patearoa and the surrounding area.

The event attracted strong interest from outside the district, with visitors travelling from Palmerston, Oamaru, Wanaka, Cromwell and Alexandra, many making a full day of it. Fiona Parker opened the Wee Patearoa Library, a small lending library for the Patearoa district housed in a tin hut on Aitken Road, which proved very popular. The Tiaki Maniototo Nursery was also well supported. Over 300 tickets were sold and with strong sales from the plant stall and raffles it made it a very successful fundraising day too.



As with previous years, Funds raised are shared between the Garden Club, the host community and a chosen charity. This year's charity will be decided at our February Garden Club meeting. A BIG thank you to all involved on the day and its success.

Written by: James

MANIOTOTO LIONS CLUB



WINTERCROP COMPETITION 2026 AWARDS NIGHT & CHARITY AUCTION

6pm Friday 29th May 2026 at Maniototo Stadium

CHARITY AUCTION of sponsors goods and services.

Guest Speaker, Bar, Evening meal, and Spot prizes.

Proceeds of the event will go towards the Otago Rescue Helicopter, Otago Community Hospice, scholarships for Telford, Lincoln and Massey Universities and various local community and health projects.

VALUING TUSSOCK GRASSLANDS IN A DRY LANDSCAPE



For Lucy Brown, who recently started as catchment coordinator with Upper Taieri Wai, the catchment group that manages Tiaki Maniototo, community is where conservation starts.



Lucy grew up on a sheep and beef farm in South Canterbury. Her interest in upland ecosystems led her to Dunedin, where she studied the grasslands of Swampy Summit, the tussock clad peak that overlooks the city. Following in the footsteps of Sir Alan Mark, who first investigated these tussocks in the 1960s, Lucy researched the incredible ability of these plants to capture water from fog. A huge amount of this water finds its way into the water table, replenishing streams and rivers. Tussocks are therefore of huge economic importance to rural and urban communities alike.

“Water yield in the Mānīatoto is a really important issue to be thinking about,” she says, “as it is such a dry climate. But I think it's also really important to be thinking about the value of the tussock grasslands. I think they can probably be underrated or not well understood as to why it's really important to conserve that kind of ecosystem.”

Lucy, who for the past 3 years has worked with Becks Smith on The Whole Story agricultural sustainability programme and podcast, lives in Dunedin but is deeply drawn to the Mānīatoto's spectacular environment, and to the community that lives here. “The great thing about the Mānīatoto is the connection between farming people and the natural environment,” she says. “It's such a unique environment and ecosystem.”

For Lucy, the answer to the challenges that face this environment lie in its people. “I'm really interested in the grassroots approach, in supporting farmers who want to make positive change in the community,” she says.

Catchment groups like Upper Taieri Wai, she says, are a powerful tool. Effective catchment groups help farmers improve water quality and biodiversity and to meet sustainability goals in their farming practice. They are a vehicle for funding and provide a focal point for community action. In a world where consumers are increasingly demanding to know more about where the food and fibre they consume is coming from, meeting

sustainability goals will ultimately allow farmers to command better premiums for the products they create.

As catchment coordinator, Lucy's goal and challenge is to build momentum for Upper Taieri Wai. “I think that you only get community buy-in by having a cause and a purpose that people can get behind,” she says. “People don't like being told what to do, and I think that the grassroots approach is empowering if it's done in the right way. I think if landowners have that buy in, they see more benefit to it.”

Lucy would love to hear from farmers, landowners and anyone in the Mānīatoto community interested in getting involved in Upper Taieri Wai. Please contact Lucy on uppertaieriwai@gmail.com

Written by: Bill Morris

POLICE UPDATE



As we all welcome the New Year and the summer months (wishful at the time of writing this), we are reminding you all to stay safe on the roads and be vigilant around your own property security.

Whilst it would be nice to be able to conduct crime prevention patrols around all your individual properties, there is only one of me and the main emphasis is on self-prevention. In theory, this means lock your stuff up and report any crime when it occurs, or soon after. I honestly believe that the very small number of crimes reported are opportunist, so let's not give them the opportunity.

There has been an increase in unlawful hunting around rural properties. This may be due to out-of-towners coming to the Mānīatoto and thinking they can shoot wild animals on other people's property. It does not. Trail cameras at gates or entry points will help identify vehicles and offenders. There are also a couple of locals that are stepping close to the line of trespassing and hunting, so either get permission from the landowners or stay away.

I am aware that unoccupied homes, farm sheds, and equipment can be more vulnerable during the summer period. Locking gates and buildings, securing tools and fuel, marking valuable equipment, and reporting any suspicious activity can significantly reduce the risk of theft.

The roads have been extremely busy with how the statutory holidays fell. I attended one crash, three drink

drivers, and 12 driver licence suspensions for speed and demerits. New legislation was introduced on 15 December 2025 for drug testing. This was introduced and is currently being integrated in the Wellington region. The four main drugs tested roadside for drivers are MDMA (ecstasy), methamphetamine (meth), cocaine, and THC (cannabis). The first Wellington positive result and prosecution was for a male who tested positive for methamphetamine and had his young daughter in the car.

I would like to thank the community for the multiple reports of dangerous speeding of a Ranfurly motorist late last year. He was stopped just out of Ranfurly, after your calls, and suspended from driving for 28 days and issued an infringement notice for \$630 with 50 demerit points. Although he has his licence back now, if you hadn't have called me, he wouldn't have been caught.

Watch your speed, make it click, and be kind to each other.

I hope you get to have some sort of respite from work and enjoy the long, hot summer. Please get in touch if you need anything. Call the Police Non-Emergency number on 105, alternatively if there is an offence occurring or offenders in the area, call 111. Be safe.

Senior Constable Jess Owens, Ranfurly Police
aoi699@police.govt.nz
021 922 416

AURORA LIGHTS UP THE MĀNIATOTO NIGHT SKY

PHOTO CREDIT:
Photographer: Alex Wilson
Source: Karen Wilson

Local aurora forecasting tools and online alert services are a great way to know when the Southern Lights may be visible across southern New Zealand, including Otago and the Mānīatoto. One popular place locals share real time sightings and updates is the Facebook group Aurora Australis New Zealand



<https://www.facebook.com/groups/NZaurora>

On the morning of 21 January 2026, stunning aurora photos were captured in the Mānīatoto between 1.00am and 2.00am. The sky was incredibly clear, with countless stars visible, creating perfect conditions for viewing and photography. It was a truly memorable night under the southern sky.

WSH
W.S HICKEY & SON LTD
WOOL MERCHANTS

70 EST. 1956
years
18th APRIL
2026

Come and help us celebrate 70 years at our site at the Maniototo A & P Show 18th February

Buying the best wool in the world for 70 years!

FROM THE HEART OF MANIOTOTO HEALTH

CEO UPDATE

Well Christmas has been and gone and the weather was not as impressive as hoped. Despite early optimism, January didn't shape up any better overall. I hope everyone had the opportunity to have a break and re-generate, as it's shaping up to be a busy year.



St Bathans Staff Christmas Event

We would like to give a big shout out to the Vulcan Hotel for hosting us. They did a fantastic job, the venue was welcoming and the food was superb. We will be back again.

Given that we are speaking about staff, can I also take this opportunity to thank all MHSL staff for their hard work and dedication, and for the care and attention they provide to the people of the Maniototo and beyond. Very proud of you all.

Resident/Family Lunch



We had a very successful and enjoyable Christmas lunch with the residents and their families. A lot of laughs and some wonderful entertainment, sung a few carols and enjoyed a beautiful meal. Thank you to all involved, it is a big undertaking to organise, and your efforts are much appreciated by all.

Extension Update



We are almost there. The building is due to be finished mid-February and brickwork is 95% complete. Work has begun on gibbing the walls, it is all moving very fast now. We continue to receive donations and are deeply appreciative of this, thank you. Rebecca (CNM) advises we already have three of the four beds spoken for, which is exciting, and confirms that there truly was a need for the extension.

Vision and Mission Statement Review

We are in the process of reviewing our Mission Statement. A Mission and Vision statement is important to a business as it helps us to create a vision and to keep to our principles to help direct us with decisions going forward and to connect people and community to the service. Our current statement has not been reviewed for many years, so we are seeking your input into some options that we have come up with.

Current MHSL mission statement:

“to provide quality, professional, compassionate patient/resident-centred health services”.

Options to consider – Mission Statement:

1. Mission: To provide professional, compassionate health care that keeps our people connected to the Maniototo, delivered by locals who care like family
2. Mission: To deliver a comprehensive range of health services locally, removing barriers to care and providing a “home away from home” for our residents.
3. Mission: Providing professional, rural healthcare with a local heart.
4. Mission: To provide professional, compassionate, and locally accessible healthcare that empowers our community to stay connected, supported, and at home in the Maniototo.

Options to consider – Vision Statements:

1. Vision: To be the heart of health in the Maniototo, ensuring no one has to leave their community to receive the care they deserve.
2. Vision: A future where every stage of life, from independent living to specialist care, is supported right here in our community.
3. Vision: Exceptional care, at your doorstep, for life.
4. Vision: To be the heart of health for the Maniototo; a growing hub of excellence where every resident can access the care, they need without leaving the community they love.

Proposed Core Values:

1. Community Connection
 “We are locals caring for locals”
 • We honour the lifelong stories and social ties of our residents. We treat every patient not just as a clinical case, but as a neighbour, ensuring they remain an active part of the Maniototo community.
2. Compassion
 “We go the extra mile with a personal touch”
 • Professionalism is our baseline, but kindness is our signature. We take the time to listen, provide comfort, and make the transition to care less stressful for both families and residents.
3. Local Accessibility
 “Rural living is not a barrier to quality care.”
 • We are committed to bringing healthcare to the doorstep of our community. We advocate for and aim to implement services that prevent the need for our people to travel

away from their support networks.

4. Integrity and Heritage
 “Maintaining a home away from home”
 • We respect the rural heritage of our region. We act with honesty and loyalty, ensuring MHS remains a trusted, stable, and welcoming environment where people feel safe and “at home”.
5. Purposeful Growth
 “Advancing our services to meet the future needs of our community.”
 • We don’t just maintain the status quo; we look ahead to ensure the Maniototo is never left behind. We actively seek ways to expand our clinical capabilities, and we invest in the professional development of our staff. Every improvement we make is intentional, aimed at ensuring MHS remains a sustainable, cutting-edge healthcare hub for generations to come.

Your Thoughts:

- What options would you prefer for Mission and Vision Statements?
- Do you believe these Core Values best represent Maniototo Health Services?

Please feel free to email me at

tracey.kubala@southerndhb.govt.nz with your response, or pop in and let us know what you think. Really tight turnaround unfortunately, as we need to have these in by **13 February 2026** at the latest so we can collate your feedback and take it to the Board meeting on 25 February 2026. Looking forward to hearing from you.

Tracey Kubala, CEO

HEALTHCARE DIRECTORY
IN AN EMERGENCY, CALL 111

SERVICE	PHONE
Ranfurlly Medical Centre	(03) 444 1073
Maniototo Health Services	(03) 444 9420
MHS Physio extn 53121	(03) 444 9420
Maniototo Pharmacy	(03) 444 9111
Peter Dick Optometrist	(03) 444 9111
Alice Lindemann Hearing	0800 727 484
Central Dental	(03) 448 8159
Lisa Denny Physiotherapist	(03) 448 6688
Podiatrist Deb Cookson	022 419 9011
Healthline	0800 611 116
Wax Out (ear wax removal)	027 419 6463
Rural Support Trust	0800 787 254
Ka Ora Health (after hours telehealth service – charges may apply)	0800 252 672
Counsellor (Free call or text any time to talk to a trained counsellor)	1737



ICL
 CHARTERED ACCOUNTANTS

Focus on your future
 11 Charlemont Street, Ranfurly, Central Otago
 Tel: (03) 444 9158, enquiries@iclca.co.nz, www.iclca.co.nz

Ear Micro-suction Clinic



Monday 23rd February
 Maniototo Hospital
 Cost \$50 adults
 \$40 child/student
 For appointment phone
 Ruth O’Neill
 027-419-6463



Janyne Fletcher Photographer Gallery
7 Charlemont Street, Ranfurly, Central Otago

Returning to Familiar Ground: Janyne Fletcher Opens New Maniototo Exhibition

Award-winning Maniototo photographer Janyne Fletcher will present a new exhibition of photographic artwork titled "Familiar Ground: Land, Light, and Time", opening with a relaxed public opening weekend on Saturday 14 and Sunday 15 February, 10.00am–3.00pm. Rather than a formal opening night, visitors are invited to drop in over the weekend during normal gallery hours to view the work and spend time with the artist. The exhibition brings together a selection of recent works shaped by Janyne's ongoing relationship with the landscapes of the Maniototo District, where she lives and works.

Alongside recognisable views of the region, including strongly composed works made over the winter months, the exhibition also features abstract and creatively layered pieces that reflect a more personal and emotional response to place. By returning again and again to familiar ground, Janyne's images explore how subtle shifts in light, season, and perspective can change what we notice over time. The work speaks to ideas of home and belonging, and to the way land becomes part of lived experience, revealing meaning slowly rather than all at once. As Janyne explains, "Photography is my chosen medium and a tool to help me make art using colour, shape, texture, pattern, and graphic elements to communicate a feeling or message. Sharing my work in a way that invites closer inspection and consideration is a significant source of creativity and originality for me."

Janyne is a respected photographic artist whose work has been widely recognised, including being awarded Grand Master status by the New Zealand Institute of Professional Photography (NZIPP), the Institute's highest distinction. "Familiar Ground" continues her established practice of creating thoughtful, place-based work that blends careful observation with personal reflection. The exhibition will run until the end of February, with works available to view and purchase during normal gallery hours at her Charlemont Street gallery in Ranfurly, and online at www.janynefletcher.co.nz.

The Pottery Club Māniatoto

We are looking forward to a new year of creating with clay.

The first night was Tuesday 27/1/2026
at the Māniatoto Arts Centre, Reade Street Ranfurly,
6.30- 8.30pm.

We welcome anyone who would enjoy the feel of clay in their hands and the possibilities that you can construct.

The annual subscription is \$100, this includes the use of the rooms, equipment, facilities and insurance.

Clay, glazes and firing are at additional cost.

Club nights are Tuesday 6.30—8.30pm.
Weekly 27th January till end of May.
Weekly September to end November 2026.

Contact: Nina Healey Ph or text 027 271 3399.



Support our local arts by scanning our QR code below...



ST BATHANS VILLAGE FETE DRAWS BIG CROWD

PHOTO CREDIT: FB POST:
 Photographer: Brigit Krippner
 Written by: James

The St Bathans Village Fete, held on Saturday 17 January, was a resounding success, with organisers delighted by both the turnout and the smooth running of the day. Despite cold Māniatoto conditions, the weather behaved itself, with no rain, wind or harsh sun, making it a win for everyone who came prepared with jackets.



Well over 1,000 people attended, briefly turning the tiny St Bathans township, home to fewer than a dozen residents, into a bustling hub. Advance ticket sales showed visitors travelled from as far as Wellington, Gore and Southland, alongside those already passing through the region.

Local support was a major highlight, with around 27 volunteers helping in various ways, from supplying gear and hay bales to assisting on the day and with pack down. Organisers said the strong community effort played a huge part in making the fete run so well, with the event meeting, and in some cases exceeding, expectations.



MANIOTOTO CONTRACTING

(2004) Ltd

HAY • BALEAGE • CULTIVATION
 DRILLING • SILAGE • HARVESTING
 FERT SPREADING • GENERAL CARTAGE

Ian & Judy Hore

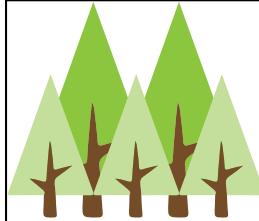
106 Alexander Street, Ranfurly
 Office: 03 976 8599 • Ian: 027 221 9803
 E: ian.maniototo@gmail.com

List of Donations given to Local Authorities for year ending November 2025 from Catholic Womens Fellowship (OP) shop.

Maniototo Support Network	\$ 500.00
Maniototo Health Services	\$6,000.00
St John's Ambulance Ranfurly	\$2,000.00
Otago & Southland Helicopter Trust	\$3,000.00
Radio Burn	300.00
Otago Rural Support	200.00
Cancer Fund	200.00



We thank the support given to our OP shop during the year and this enables us to continue to support our local charities.



Naseby Holiday Park

Not just a campground!

Open all year with a range of accommodation to suit everyone, including two and three bedroom cottages, cabins, powered, non-powered and self-contained sites.

Check out our website for more details and specials! www.nasebyHP.nz or phone (03) 444 9904

WAIPIATA COUNTRY HOTEL

est. 1899

New Owners Raj & Vidhya Welcome You!

FRIDAY NIGHT MEAL DEALS
 From \$12

Sirloin steak and chips
 Snapper and chips
 (both served with salad)
 Gourmet pizzas



enquiries@waipiatahotel.co.nz

ph. (03) 444 9470

4 FOUR SQUARE SUPERMARKET


MANIOTOTO

Ph: 03 444 9021 E: maniototo@foursquare-si.co.nz
 1 Pery Street, Ranfurly (opp. Information Centre)

- Fresh meat, fruit and vegetables
- General stores • NZ Post Agent
- Extensive beer and wine selection



February 2026

Sun	Mon	Tue	Wed	Thu	Fri	Sat
<p>1</p> <p>-Presbyterian Church, 10am -Catholic Mass, 5pm -Anglican Parish, 10.30am -Naseby Golf, 12.30pm -Toy Library, 11am-12pm -Barre Fit Class, Arts Centre, 2.15pm</p>	<p>2</p> <p>START OF TERM 1 -Pilates, Masonic Lodge, 4.30-5.30pm -Scrap booking & card making, Arts Centre 10.30am -Dance Classes, Arts Centre, 3pm</p>	<p>3</p> <p>-Ranfurly Playcentre, 9.30am-11.30am -Steady As You Go, Stadium rugby rooms 10.30am -Maniototo Golf, Ladies, 11am & 9 hole 12.30pm -Scrabble & cards, Hospital 1.30pm -Barre Fit Class, Arts Centre, 6am -Pottery, Arts Centre 6.30pm</p>	<p>4</p> <p>-Men's Outdoor Bowls, 1.30pm -Op Shop, 10.30am-4.30pm -Tai chi, Arts Centre 10am -Embroidery Guild, Arts Centre, 10am</p>	<p>5</p> <p>-Women's Outdoor Bowls, 1.30pm -Pilates, Masonic Lodge, 4.30-5.30pm -Ballet, Arts Centre 3pm -Barre Fit Class, Arts Centre, 7pm -Garden Club Meeting, 7.30pm</p>	<p>6 WAITANGI DAY</p>	<p>7</p> <p>-Maniototo Golf, 12.45pm -Men's Outdoor Bowls, 1.30pm NASEBY COMMUNITY GARAGE SALE, NASEBY TOWN HALL, 10AM-1PM</p>
<p>8</p> <p>-Presbyterian Church, 10am -Catholic Mass, 5pm -Naseby Golf, 12.30pm -Barre Fit Class, Arts Centre, 2.15pm</p>	<p>9</p> <p>-Pilates, Masonic Lodge, 4.30-5.30pm -Scrap booking & card making, Arts Centre 10.30am -Dance Classes, Arts Centre, 3pm -Spinners, Weavers, Knitting Group, Arts Centre 10am</p>	<p>10</p> <p>-Ranfurly Playcentre, 9.30am-11.30am -Steady As You Go, Stadium rugby rooms 10.30am -Maniototo Golf, Ladies, 11am & 9 hole 12.30pm -Scrabble & cards, Hospital 1.30pm -Barre Fit Class, Arts Centre, 6am -Pottery, Arts Centre 6.30pm</p>	<p>11</p> <p>-Men's Outdoor Bowls, 1.30pm -Op Shop, 10.30am-4.30pm -Tai chi, Arts Centre 10am -Embroidery Guild, Arts Centre, 10am</p>	<p>12</p> <p>-Women's Outdoor Bowls, 1.30pm -Pilates, Masonic Lodge, 4.30-5.30pm -Ballet, Arts Centre 3pm -Toy Library 3.15pm-4.15pm -Barre Fit Class, Arts Centre, 7pm</p>	<p>13</p> <p>-Op Shop, 10.30am-4.30pm -Ranfurly Playcentre, 9.30am-11.30am -Kids Art Club, Presbyterian Church, 3.10pm-4.30pm -MHSL Mission Statement Response Deadline</p>	<p>14 VALENTINE'S DAY</p> <p>-Maniototo Golf, 12.45pm -Men's Outdoor Bowls, 1.30pm CENTRAL OTAGO A&P SHOW 10AM - OMAKAU DOMAIN </p>
<p>15</p> <p>-Presbyterian Church, 10am -Catholic Mass, 5pm -Naseby Golf, 12.30pm -Barre Fit Class, Arts Centre, 2.15pm</p> <p>Deadline for Positively Māniatoto Submissions - for March edition.</p>	<p>16</p> <p>-Pilates, Masonic Lodge, 4.30-5.30pm -Scrap booking & card making, Arts Centre 10.30am -Dance Classes, Arts Centre, 3pm</p>	<p>17</p> <p>-Ranfurly Playcentre, 9.30am-11.30am -Steady As You Go, Stadium rugby rooms 10.30am -Maniototo Golf, Ladies, 11am & 9 hole 12.30pm -Barre Fit Class, Arts Centre, 6am -Combined Church Service, Hospital, 2pm -Pottery, Arts Centre 6.30pm</p>	<p>18</p> <p>-Op Shop, 10.30am-4.30pm -Tai chi, Arts Centre 10am -Embroidery Guild, Arts Centre, 10am MANIOTOTO A&P SHOW 8AM - SHOWGROUNDS</p>	<p>19</p> <p>-Pilates, Masonic Lodge, 4.30-5.30pm -Ballet, Arts Centre 3pm -Barre Fit Class, Arts Centre, 7pm</p>	<p>20</p> <p>-Op Shop, 10.30am-4.30pm -Ranfurly Playcentre, 9.30am-11.30am -Kids Art Club, Presbyterian Church, 3.10pm-4.30pm</p>	<p>21</p> <p>-Maniototo Golf, 12.45pm -Bowls Tournament @ Ranfurly, 1.30pm</p>
<p>22</p> <p>-Presbyterian Church, 10am -Catholic Mass, 5pm -Naseby Golf, 12.30pm -Barre Fit Class, Arts Centre, 2.15pm</p>	<p>23</p> <p>-Pilates, Masonic Lodge, 4.30-5.30pm -Scrap booking & card making, Arts Centre 10.30am -Dance Classes, Arts Centre, 3pm -Spinners, Weavers, Knitting Group, Arts Centre 10am</p>	<p>24</p> <p>-Ranfurly Playcentre, 9.30am-11.30am -Barre Fit Class, Arts Centre, 6am -Steady As You Go, Stadium rugby rooms 10.30am -Maniototo Golf, Ladies, 11am & 9 hole 12.30pm -Scrabble & cards, Hospital 1.30pm -Pottery, Arts Centre 6.30pm</p>	<p>25</p> <p>-Men's Outdoor Bowls, 1.30pm -Op Shop, 10.30am-4.30pm -Tai chi, Arts Centre 10am -Embroidery Guild, Arts Centre, 10am</p>	<p>26</p> <p>-Pilates, Masonic Lodge, 4.30-5.30pm -Ballet, Arts Centre 3pm -Toy Library 3.15pm-4.15pm -Barre Fit Class, Arts Centre, 7pm Maniototo Community Support Hub, Ranfurly Medical Centre, 10am-1pm</p>	<p>27</p> <p>-Op Shop, 10.30am-4.30pm -Ranfurly Playcentre, 9.30am-11.30am -Kids Art Club, Presbyterian Church, 3.10pm-4.30pm</p>	<p>28</p> <p>-Maniototo Golf, 12.45pm -Men's Outdoor Bowls, 1.30pm</p>



Positively
MĀNIATOTO!

March 2026

Sun	Mon	Tue	Wed	Thu	Fri	Sat
<p>1</p> <p>-Presbyterian Church, 10am -Catholic Mass, 5pm -Anglican Parish, 10.30am -Naseby Golf, 12.30pm -Toy Library, 11am-12pm -Barre Fit Class, Arts Centre, 2.15pm</p>	<p>2</p> <p>-Pilates, Masonic Lodge, 4.30-5.30pm -Scrap booking & card making, Arts Centre 10.30am -Dance Classes, Arts Centre, 3pm</p>	<p>3</p> <p>-Ranfurly Playcentre, 9.30am-11.30am -Steady As You Go, Stadium rugby rooms 10.30am -Maniototo Golf, Ladies, 11am & 9 hole 12.30pm -Scrabble & cards, Hospital 1.30pm -Barre Fit Class, Arts Centre, 6am -Pottery, Arts Centre 6.30pm</p>	<p>4</p> <p>-Men's Outdoor Bowls, 1.30pm -Op Shop, 10.30am-4.30pm -Tai chi, Arts Centre 10am -Embroidery Guild, Arts Centre, 10am</p>	<p>5</p> <p>-Women's Outdoor Bowls, 1.30pm -Pilates, Masonic Lodge, 4.30-5.30pm -Ballet, Arts Centre 3pm -Barre Fit Class, Arts Centre, 7pm</p>	<p>6</p> <p>-Op Shop, 10.30am-4.30pm -Ranfurly Playcentre, 9.30am-11.30am -Kids Art Club, Presbyterian Church, 3.10pm-4.30pm</p>	<p>7</p> <p>-Bowls Tournament @ Waipiata, 1.30pm CAVALCADE MARKET DAY & HOE DOWN - MIDDLEMARCH</p>
<p>8</p> <p>-Presbyterian Church, 10am -Catholic Mass, 5pm -Naseby Golf, 12.30pm -Barre Fit Class, Arts Centre, 2.15pm</p>	<p>9</p> <p>-Pilates, Masonic Lodge, 4.30-5.30pm -Scrap booking & card making, Arts Centre 10.30am -Dance Classes, Arts Centre, 3pm -Spinners, Weavers, Knitting Group, Arts Centre 10am</p>	<p>10</p> <p>-Ranfurly Playcentre, 9.30am-11.30am -Steady As You Go, Stadium rugby rooms 10.30am -Maniototo Golf, Ladies, 11am & 9 hole 12.30pm -Scrabble & cards, Hospital 1.30pm -Barre Fit Class, Arts Centre, 6am -Pottery, Arts Centre 6.30pm</p>	<p>11</p> <p>-Men's Outdoor Bowls, 1.30pm -Op Shop, 10.30am-4.30pm -Tai chi, Arts Centre 10am -Embroidery Guild, Arts Centre, 10am</p>	<p>12</p> <p>-Pilates, Masonic Lodge, 4.30-5.30pm -Ballet, Arts Centre 3pm -Toy Library 3.15pm-4.15pm -Barre Fit Class, Arts Centre, 7pm HUDDL WORKSHOP, ARTS CENTRE, 12PM-1.30PM</p>	<p>13</p> <p>-Op Shop, 10.30am-4.30pm -Ranfurly Playcentre, 9.30am-11.30am -Kids Art Club, Presbyterian Church, 3.10pm-4.30pm</p>	<p>14</p> <p>-Bowls Tournament @ Naseby, 1.30pm WANAKA A&P SHOW 13TH & 14TH, SHOWGROUNDS</p>
<p>15</p> <p>-Presbyterian Church, 10am -Catholic Mass, 5pm -Naseby Golf, 12.30pm -Barre Fit Class, Arts Centre, 2.15pm Deadline for Positively Māniatoto Submissions - for April edition.</p>	<p>16</p> <p>-Pilates, Masonic Lodge, 4.30-5.30pm -Scrap booking & card making, Arts Centre 10.30am -Dance Classes, Arts Centre, 3pm</p>	<p>17 ST PATRICK'S DAY</p> <p>-Ranfurly Playcentre, 9.30am-11.30am -Steady As You Go, Stadium rugby rooms 10.30am -Maniototo Golf, Ladies, 11am & 9 hole 12.30pm -Barre Fit Class, Arts Centre, 6am -Scrabble & cards, Hospital 1.30pm -Combined Church Service, Hospital, 2pm -Pottery, Arts Centre 6.30pm</p>	<p>18</p> <p>-Op Shop, 10.30am-4.30pm -Tai chi, Arts Centre 10am -Embroidery Guild, Arts Centre, 10am</p>	<p>19</p> <p>-Women's Outdoor Bowls, 1.30pm -Pilates, Masonic Lodge, 4.30-5.30pm -Ballet, Arts Centre 3pm -Barre Fit Class, Arts Centre, 7pm</p>	<p>20</p> <p>-Op Shop, 10.30am-4.30pm -Ranfurly Playcentre, 9.30am-11.30am -Kids Art Club, Presbyterian Church, 3.10pm-4.30pm</p>	<p>21</p> <p>-Maniototo Golf, 12.45pm -Men's Outdoor Bowls, 1.30pm MANIOTOTO YOUNG FARMERS "BARK UP"</p>
<p>22</p> <p>-Presbyterian Church, 10am -Catholic Mass, 5pm -Naseby Golf, 12.30pm -Barre Fit Class, Arts Centre, 2.15pm STRATH TAIERIA A&P SHOW 8AM -7PM, MIDDLEMARCH</p>	<p>23 OTAGO ANNIVERSARY DAY</p>	<p>24</p> <p>-Ranfurly Playcentre, 9.30am-11.30am -Barre Fit Class, Arts Centre, 6am -Steady As You Go, Stadium rugby rooms 10.30am -Maniototo Golf, Ladies, 11am & 9 hole 12.30pm -Scrabble & cards, Hospital 1.30pm -Pottery, Arts Centre 6.30pm</p>	<p>25</p> <p>-Men's Outdoor Bowls, 1.30pm -Op Shop, 10.30am-4.30pm -Tai chi, Arts Centre 10am -Embroidery Guild, Arts Centre, 10am</p>	<p>26</p> <p>-Women's Outdoor Bowls, 1.30pm -Pilates, Masonic Lodge, 4.30-5.30pm -Ballet, Arts Centre 3pm -Toy Library 3.15pm-4.15pm -Barre Fit Class, Arts Centre, 7pm Maniototo Community Support Hub, Ranfurly Medical Centre, 10am-1pm</p>	<p>27</p> <p>-Op Shop, 10.30am-4.30pm -Ranfurly Playcentre, 9.30am-11.30am -Kids Art Club, Presbyterian Church, 3.10pm-4.30pm</p>	<p>28</p> <p>-Bowls Tournament @ Paearoa, 1.30pm</p>
<p>29</p> <p>-Presbyterian Church, 10am -Catholic Mass, 5pm -Naseby Golf, 12.30pm -Barre Fit Class, Arts Centre, 2.15pm</p>	<p>30</p> <p>-Pilates, Masonic Lodge, 4.30-5.30pm -Scrap booking & card making, Arts Centre 10.30am -Dance Classes, Arts Centre, 3pm -Spinners, Weavers, Knitting Group, Arts Centre 10am</p>	<p>31</p> <p>-Ranfurly Playcentre, 9.30am-11.30am -Barre Fit Class, Arts Centre, 6am -Steady As You Go, Stadium rugby rooms 10.30am -Maniototo Golf, Ladies, 11am & 9 hole 12.30pm -Scrabble & cards, Hospital 1.30pm -Pottery, Arts Centre 6.30pm</p>				

Positively
MĀNIATOTO!



COMMUNITY CONTACTS:

Ballet, Contemporary Dance, Barre Fit Classes

Melissa 021 220 8655

Catholic Women's Fellowship - Opportunity Shop

Francie (03) 444 9243

Embroidery Guild

Diane (03) 444 9831

Jazz & Contemporary Dance

Brit 021 239 7345

Kids' Art Club

Rowena 027 259 2320

Maniototo Golf Club

Mark 027 423 911

Naseby Golf Club

Jacqui 021 220 0310

Patearoa Golf Club

Suzy 027 201 4054

Ranfurly Bowling Club

Maureen 027 506 7375

Patearoa Bowling Club

Doreen 027 490 5970

Pilates:

Barb 021 165 4872

Scrap booking and cardmaking

Sandra 027 847 5643

Scrabble & Cards

Helen 027 333 1267

Spinning, Knitting & Weaving

Lyn 027 557 1638

The Pottery Club Māniatoto

Nina 027 271 3399

Steady As You Go

Joan (03) 444 9629

Tai Chi (03) 444 9831

Maniototo Garden Club

Denise 021 0252 0116

Gilchrist store

Main Road | Oturehua



John & Helen Hellier

www.gilchriststore.co.nz

P (03) 444 5808 E shop@gilchriststore.co.nz

Opening Hours: Monday to Friday 8am – 5 pm;
Saturdays 8am – 2 pm; and Sundays 10am – 2pm

New Zealand's Longest continuous General Store Business - 125 years

Ranfurly

Veterinary Centre

by the Big Blue Cross

Your animal health professionals
looking after all your pets and farm animals!



BEST BRANDS

We've got what
you need when you
need it ... backed
with the very best
veterinary advice!



03 444 1020

www.vet11.co.nz

HEAVY EQUIPMENT DIESEL MECHANICS

*Proud to support the
community we live in*

Paul Bain

027 253 1137

paul@mcer.co.nz

www.mcer.co.nz



MINING & CONSTRUCTION EQUIPMENT REPAIRS LTD

Your Contributions

Positively
MĀNIATOTO!

We welcome your submissions for consideration in Positively Māniatoto! Send in short articles (200–300 words), milestones, events, history, recipes, poems, photos, ads, or anything of local interest. **Deadline: 15th of each month.**

Classified Advertising

Submit classified ads, calendar entries, or articles with photos for consideration to positivelymaniototo@gmail.com by the 15th. Contact us for ad sizes and costs.

Contact Us

Radio Charity, trading as Burn 729AM, produces Positively Māniatoto and provides live on-air communication. Donations are welcome - get in touch!

Email: positivelymaniototo@gmail.com

Unifone

RURAL AND URBAN INTERNET, MOBILE AND PHONE

FIBRE
PLANS FROM

\$79
/ month*

WI-FI
PLANS FROM

\$99
/ month*

MOBILE
PLANS FROM

\$40
/ month**

HOLIDAY HOME
PLANS FROM

\$35
/ month*

SHED
PLANS FROM

\$29
/ month*

UNIFONE COVER: Alexandra, Clyde, Omakau, Lauder, Ida Valley, Moa Creek, Oturehua, Ranfurly, Kyeburn, Waipiata, Hyde, Paerau, Styx Creek, Middlemarch and more!

0800 894 114 **unifone.nz**

LOCALS CONNECTING LOCALS - WE'RE 100% OTAGO OWNED AND OPERATED

*Terms and conditions apply. **If you are an Internet customer.



Free Ranfurly Workshop

Community Committee Essentials: The Lifecycle of your Board

Thursday 12 March: 12pm - 1.30pm

Māniatoto Arts Centre
3 Reade St, Ranfurly



huddl and Volunteer South warmly invite all local non-profit and community groups to a FREE workshop in Ranfurly. Join us for a chance to:

- Learn to attract and welcome new board or committee members
- Get practical tips for succession planning
- We'll share tips and tools to help your board

Scan the QR code or head to www.huddl.nz to secure your spot



Email hello@huddl.nz for more information.

WEDDERBURN CHRISTMAS MARKET DELIVERS FESTIVE EVENING



Angela Stockdale, owner of the Wedderburn Tavern, reflected positively on the Wedderburn Christmas Market held on Tuesday 23 December at the Beer Garden Marquee.

Angela said the market went well and exceeded her expectations. She described the stalls as fantastic and said stallholders were very happy with the level of sales throughout the evening. One highlight was seeing local farmers able to do their Christmas shopping close to home, picking up gifts locally rather than needing to travel into town.

Fine weather played a big part in the success of the event, with a beautiful afternoon helping to draw a strong crowd. Angela said there was a steady flow of people through the market, including holidaymakers, which added to the atmosphere.

Held just days before Christmas, the market had a relaxed and festive feel, with people in good spirits throughout the evening. Maniototo Young Farmers also had a successful fundraiser on site, selling plenty of sausages and burgers, which Angela said were delicious.

Overall, Angela said it was a really good event, and she is already looking forward to next year's Wedderburn Christmas Market.

Written by: Erica

MANIOTOTO YOUNG FARMERS PRESENTS...
CHANGE OF DATE
STONEHENGE MERINO STUD BARK UP

21ST MARCH

@WedderburnTavern

Checketts McKay Law

Gillian Clarke Director	Rachel Andrews Senior Solicitor	Bridget Becker Legal Assistant	Marilyn Ede Legal Assistant

ranfurly@cmlaw.co.nz
CALL NOW 03 444 9060
or visit www.cmlaw.co.nz

PLEASE NOTE THE RANFURLY OFFICE IS OPEN
MONDAY, TUESDAY & FRIDAY 9.00AM-5.00PM AND
WEDNESDAY & THURSDAY 9.00AM-3.00PM

Your Local Supporters.

Valentine's Day

Saturday 14th February

Valentine's Picnic Basket Maniototo Style

Food

- ♥ Fresh bread & rolls
- ♥ Cheese, crackers, & cured meats
- ♥ Smoked fish or cold roast lamb
- ♥ Seasonal fruit & homemade baking
- ♥ Chocolate or sweet treats

Drinks

- ♥ Local wine, cider, or beer
- ♥ Sparkling water or juice
- ♥ Hot tea or coffee in a flask

Essentials

- ♥ Picnic blanket
- ♥ Plates, cups, cutlery & napkins
- ♥ Knife, board & rubbish bag

Little Extras

- ♥ A handwritten note or flowers
- ♥ Sunscreen & a warm layer

Perfect for a relaxed Valentine's lunch in the Maniototo!



The Importance of Having an Up-to-Date Will in New Zealand

In New Zealand, having a legally valid and current will is one of the most important steps you can take to protect your loved ones and ensure your wishes are respected after your death. Despite its significance, many people either delay making a will or forget to update it as life changes. This oversight can lead to unintended consequences, legal complications, financial reverberations, and emotional stress for surviving family members.

What Is a Will?

A will is a legal document that outlines how your assets, such as property, money, and personal belongings, should be distributed after your death. It also allows you to:

- Appoint guardians for minor children
- Name an executor to manage your estate
- Express your wishes for funeral arrangements

Who Should Have a Will?

In short, every person over the age of 18 years.

You may not consider that your assets reach the threshold to justify creating a will, however you probably have more than you think. Almost all estates we deal with for persons under the age of 65 will likely involve KiwiSaver funds.

Why Is It So Important?

Avoiding Intestacy and Government Control
If you die without a valid will, known as dying “intestate”, your estate is distributed according to the Administration Act 1969, which may not reflect your personal wishes. In some cases, your assets could even end up with the government if no eligible relatives are found.

Protecting Your Loved Ones

A will ensures that your spouse, children, and other dependents are provided for in the way you intend. Without one, blended families and stepchildren may face complex legal hurdles or be excluded entirely from inheritance.

Appointing Guardians for Children

For parents of young children, a will is crucial for nominating guardians. Without this, the Family Court decides who will care for your children, which may not align with your values or family dynamics.

Minimising Disputes and Delays

A clear, legally valid will helps prevent family disputes and reduces the risk of claims under the Family Protection Act 1955. It also streamlines the probate process, saving time and legal costs.

Tax and Asset Planning

Proper estate planning through a will can help minimise tax liabilities and ensure that more of your estate goes to your chosen beneficiaries rather than to legal fees or taxes.

Why Keeping Your Will Up to Date Matters

Life changes, such as marriage, divorce, the birth of children or grandchildren, acquiring new assets, or relocating, can all affect how your estate should be distributed. In New Zealand, marriage automatically revokes a previous will unless the will was made in contemplation of that marriage. Divorce invalidates provisions related to your ex-partner, but separation does not. As life changes, so should your will.

When Should You Review Your Will?

The New Zealand Law Society recommends reviewing your will:

- Every five years
- After major life events, for example marriage, divorce, birth of a child, or death of a beneficiary
- When acquiring or disposing of significant assets
- If you wish to change your executor or guardians

Final Thoughts

Creating and maintaining an up-to-date will is not just a legal formality, it is a powerful act of care and responsibility. It ensures your legacy is honoured, your loved ones are protected, and your estate is managed according to your values. Whether your assets are modest or substantial, a well-crafted will provides peace of mind and clarity during one of life’s most difficult transitions.

If you do not yet have a will, or have not updated yours recently, now is the time to speak with a lawyer. At Checketts McKay, we can assist with all your estate planning needs. Get in touch with one of our lawyers who can create a will tailored specifically to meet your needs. It is one of the most important documents you will ever create.

OMAKAU TROTS BRINGS SUCCESSFUL SUMMER RACE DAY

Omakau Trots President Graham Sinnamon spoke about how this year's event unfolded at Omakau Racecourse on January 2, 2026.



Despite an uncertain start to the day with early rain and a less than promising forecast, Graham said the event turned into a huge success.



As the weather cleared, crowds continued to arrive, easing early concerns about whether people would still



Aotea

- Residential Electrical
- Industrial Electrical
- Commercial Electrical
- Agricultural Electrical
- Air Conditioning
- Home Automation
- Communications
- Audio Visual
- Appliance Repair
- Tool Repair
- Test & Tag

Connect with us
027 665 3552
aoteagroup.nz
maniototo@www.aotea.co.nz

Ranfurlly - Omakau - Naseby - Ida Valley - Lauder

come out after Christmas and in what many are describing as tighter economic times.

Attendance continued to grow throughout the day, with organisers estimating close to 10,000 people were on site. Graham said the scale of the crowd was well ahead of last year and highlighted just how popular the Omakau Trots have become as a summer destination.



Motorhome numbers were also well up, with registrations increasing from around 105 beforehand to approximately 185 on race day.

Graham noted that while growth is encouraging, it also presents challenges. Infrastructure such as toilets, vendor space, and overall logistics are already at capacity, and any further increase would require careful planning. He said organisers spend much of the day focused on practical details, making sure vendors are operating smoothly, facilities are coping, and everything is running as it should.

For Graham, the enjoyment often comes once the day is over and everything has worked. He said it is only at the end that organisers can step back and appreciate the effort that goes into delivering an event of this scale.

With the Omakau Trots firmly established as a popular summer event, Graham said the committee is proud of what the day has become. Strong attendance, a relaxed family atmosphere, and growing interest continue to see the Omakau Trots recognised as a standout summer harness racing event in Central Otago.

Written by: James

RANFURLLY
MINI Digger
HIRE
WITH AN OPERATOR

JONO **022-672-7720** 1.6 Digger (with thumb grab)

NEW FIREFIGHTERS READY TO SERVE



Ranfurly Volunteer Fire Brigade is proud to congratulate Bailey Forbes of Ranfurly and Jack Steele of Naseby, who have recently returned from

Rotorua after successfully completing the Fire and Emergency New Zealand Volunteer Recruit Course.

After an intensive week of training, Bailey and Jack are now officially qualified firefighters, ready to serve and protect their local communities. Completing the recruit course is a significant milestone and marks the beginning of their operational firefighting roles.

The Fire and Emergency New Zealand Recruit Course is a demanding, hands-on programme designed to prepare new volunteers to respond safely and effectively to emergencies. During the week, participants undertook live fire and practical training, breathing apparatus and hose handling, structural firefighting techniques, safety protocols, medical co response training, and exercises focused on building both physical and mental resilience.

The course requires a major commitment of time and effort, including time away from home, and reflects the dedication required of volunteer firefighters. Successfully completing the training is a strong achievement and one that deserves real recognition.

The Ranfurly Volunteer Fire Brigade is incredibly proud of Bailey and Jack and looks forward to seeing them grow in their roles as part of the brigade and the wider Fire and Emergency New Zealand firefighting family.

One Earth Electrical

Local domestic electrician
Call Andrew on 027 266 3906
ask.one.earth@gmail.com

CENTRAL ENGINEERING
INNOVATIVE ENGINEERING SOLUTIONS

Based in the heart of rural Otago, Cen Eng is your trusted partner in engineering innovation.

Specialising in developing innovative solutions we design and manufacture a wide range of products for agricultural and energy industries right here in Otago. Our technical services team also provides water metering, control and telemetry services on a farm level through to design and project management of large scale engineering projects in construction, infrastructure, energy and mining.

Contact us to discover how our engineering solutions can support innovation in your operation.

Cen Eng Limited 03 4473 757 www.ceneng.co.nz 66 Leask Street Otago

Gallaway Cook Allan is a premier Otago-based full service law firm.

Contact Nathan Adams or Tom Willis for all your Agribusiness needs:

- Farm conveyancing;
- Property related work including Subdivisions, Leases and Easements;
- Succession Planning; and
- Corporate work including syndicates.



03 474 6725
nathan.adams@gallawaycookallan.co.nz



03 474 9785
tom.willis@gallawaycookallan.co.nz



www.gallawaycookallan.co.nz

AEM AUTOMOTIVE MACHINERY ENGINEERING

ENGINEERING DIVISION

- + Mobile welding service
- + Steel & alloy repairs
- + Custom farm gates
- + Pivot gates from \$1,050 + gst
- + Heavy duty flat decks from \$5,500 + gst
- + Certified welders AS/NZS 1554.1:2014
- + Mobile hydraulic hose service

Call today! 021 190 8187
andy@aem.net.nz | www.aem.net.nz
8 MITCHELL ST, RANFURLY 9332



CLAAS Harvest Centre **CLAAS**

WE'RE HERE FOR YOU

CLAAS Harvest Centre Ranfurly are proud to support the Maniototo District!
For tailored equipment advice, servicing and support. Let's talk!

26-014 Duncan Nicolson 027 252 5574
RANFURLY
16 Mitchell Street

CLAAS
Harvest Centre


NASEBY COMMUNITY GARAGE SALE

If you have things you want to sell and want to join us, get in touch and book a table.

Naseby Town Hall
Saturday 7th February 2026
10am to 1pm

\$15.00 per table
(to cover hall hire costs)

Contact:
Beth Connell
nasebyevent26@gmail.com



Colliers

Maximise your property's value with the best advice.
If you're looking to buy or sell property contact Helen today on 027 367 4063.



PARKER
EARTHMOVING

027 512 4677

Civil Construction & Farm Services

www.parkerearthmoving.com

Mountain View
ChemDry

We cover Alexandra through to Ranfurly/ Naseby and everywhere in between.

CARPET & UPHOLSTERY CLEANING
FLOOD & FIRE RESTORATION
SPECIALITY STAIN REMOVAL
MOULD REMOVAL & REMEDIATION
URINE & ODOUR REMOVAL

03 442 3775
mountainview@chemdry.co.nz

CHALLENGE !

Ranfurly
SAVE 6c per LITRE

With your *My Challenge Card*
Keep an eye out for our 15c discount days!

Super Gold card holders get 10c per litre discount.
Also Farmlands card holders get 12c per litre off.
You'll also earn 1 point for every \$1 you spend*, which you can redeem for rewards in store.

* Excluding purchases of cigarettes, Points expire 2 years from the date the relevant points were awarded. Full terms and conditions available at www.mychallenge.co.nz.

Workshop
WOFs, auto-electrical, scanning, tyres, servicing and repairs.
(03) 444 9011

MANIOTOTO RODEO ENJOYS STRONG TURNOUT AND CONDITIONS

Written by: Erica

Maniototo Rodeo delivered a successful and enjoyable day for competitors, locals, and visitors when it was held at Waipiata, Ranfurly on Saturday 13 December 2025, with action getting underway from 9am.

Mandy Dalziel said the rodeo went fantastically, with strong entry numbers across the events and plenty of positive feedback. She noted that it felt like the crowd bank was well filled this year, helped by fine weather that turned out to be one of the best summer days so far.

A new hospitality tent added something extra to the day, hosting around 50 people who were there for Christmas celebrations. Mandy said the group enjoyed the food,

drinks, and rodeo atmosphere and have already indicated they will be back next year.

The date suited many locals, with good community support evident throughout the day. Newly built stockyards also performed well, with only minor adjustments needed to further improve stock flow and welfare.

Competitors were happy with the conditions and competition, particularly as it was only the third rodeo of the season. An Australian bull rider took out the bull riding, adding to the excitement and interest for future events.

Mandy said the committee was very happy with how the day went and pleased with how the event came together overall.

A special shout out to our sponsors, helpers, everyone involved to make it a successful day. We thank you. Regards Maniototo Rodeo Club.





AUTOMOTIVE
MACHINERY
ENGINEERING

AUTOMOTIVE DIVISION

- ✦ Car/Ute WoF just \$79
- ✦ Car servicing from \$230
- ✦ SUV servicing from \$280
- ✦ Ute servicing from \$300
- ✦ Timing belt replacements
- ✦ Brake repairs
- ✦ Tyres and puncture repairs

Book today! 021 190 8187

andy@aem.net.nz | www.aem.net.nz

8 MITCHELL ST, RANFURLY 9332

Gallaway Cook Allan is a premier Otago-based full service law firm.

Contact Devon Miller for all your Private Client needs:

- Wills and Enduring Powers of Attorney;
- Estate administration;
- Relationship Property; and
- Trusts and Asset Protection.



03 474 9790
devon.miller@gallawaycookallan.co.nz
www.gallawaycookallan.co.nz





Need personal, non-biased insurance advice for...

Your farm or business? Your home and contents? Your life and health? Your income protection?

OFS Insurance Brokers are locally owned and managed insurance specialists offering personal advice and a no obligation chat about your insurance needs.

Call Hunter today.



Hunter Stevenson
Insurance Broker
p: (03) 471 6800
m: 027 438 1288
e: hunter@ofs.nz

GRAHAM ELECTRICAL LTD

Contracting, appliance sales and service since 1954

Shop 444 9314 Doug 027 438 8380

Rob 027 447 8627 Nic 027 330 4605

grahamelectrical@xtra.co.nz

FUJITSU Haier

Fujitsu and Haier air conditioning

Fisher & Paykel Appliances,
Panasonic TVs



MOUNTAIN VIEW
CLEANING & PEST CONTROL

We cover Alexandra through to Ranfurly/ Naseby and everywhere in between.

PEST CONTROL | MOULD REMEDIATION | BUILDERS CLEANS | INTERNAL CLEANS | WINDOWS | GUTTERS | BUILDING WASH DOWNS | WATER BLASTING

0800 278 732 | info@mvservices.nz
mountainviewservices.nz

PGG Wrightson Real Estate

REACH OUT TO YOUR LOCAL AGENTS

for a confidential chat about your Real Estate needs.

RURAL, LIFESTYLE & RESIDENTIAL SALES



Shane Turfus
021 246 6383
shane.turfus@pggwrightson.co.nz

Scan the QR code with phone camera to view our listings



Sally Taylor
027 346 7986
sally.taylor@pggwrightson.co.nz



pggwre.co.nz

PGG Wrightson Real Estate Limited, licensed under the REAA 2008.



AUTOMOTIVE MACHINERY ENGINEERING

MACHINERY DIVISION

- Tractor servicing, Case/New Holland
- Machinery servicing, CAT, Hitachi, Komatsu, all makes
- Farm implement servicing
- Hydraulic repairs
- Hydraulic ram rebuilds
- Tractor transmission repairs

Book today! 021 190 8187 MOBILE SERVICE
andy@aem.net.nz | www.aem.net.nz
8 MITCHELL ST, RANFURLY 9332

TIME FOR SUNSHINE & SAVINGS

View all offers and book a free in-home consultation at russellscurtains.co.nz

Russells

The curtain & blind specialists

*Terms and conditions apply

Positively

MĀNIATOTO! OUT AND ABOUT



Photo shoot of Tussock the cat and Rodgette the hen proving that free range friendships are a thing. Captured by Micheala Allen.



Sunflowers brightening the middle of Ranfurly outside The Bizarre Affair, bringing a splash of colour and a few smiles to the street. Captured by William Parker.



Hoggets coming in for dipping at Gimmerburn. One dog, a lot of opinions, and not a single sheep volunteer to go first. Captured by Debbie Paterson.



Mr Pudge striking his best distinguished gentleman pose, politely waiting for compliments. And snacks. Captured by Mikaela Rowe.



Unloading a house while we had coffee at Black Forest Cafe. Some people multitask, others just watch buildings fly by. Captured by Frank and Annie Peppers.



The cows were not interested in buying what the little salesman was offering. Just viewed the little salesman run out their front door. Captured by Bethany Fullerton.



Fullerton family cat plotting a modelling career. What a striking pose, definitely showing off its best side with the light behind it. Captured by Bethany Fullerton.



Trophy stags enjoying grain. Proof that even reindeer need a Central Otago escape after Christmas. Captured by Leora Werner.



Snow in Naseby in October 2025. Spring had officially taken the scenic route. Captured by Frank and Annie Pepers.



Naseby Family Fun Day at the Naseby Recreation Ground on 1 January 2026. It was well attended and a great way for families to start the year, with old fashioned games, races, and plenty of good times from midday onwards. Source: Adir Craik F.Book.



These two trucks made countless trips picking up and returning lambs. A huge thanks to Ranfurly Transport Ltd and the volunteer crew who worked through the night in the dark and rain to get the job done for "Clip For A Cause". Source: Trina Armstrong F.Book.



Exploring Dykes Dam at Sowburn. A bit of scrambling, a lot of scenery, and plenty of fresh air to go with it. Captured by Debbie Paterson.



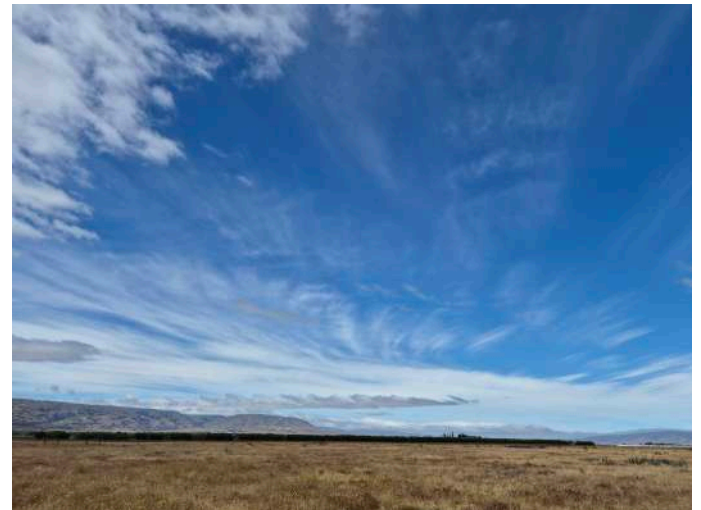
Gemma Hore, Amanda Graham, Lori McDonald and Sarah Smith competing in the Cribbies v Locals Bowling Tournament in Naseby in the New Year. Serious bowling skills, colourful tutus, and plenty of fun on the green. Source: A Pont.



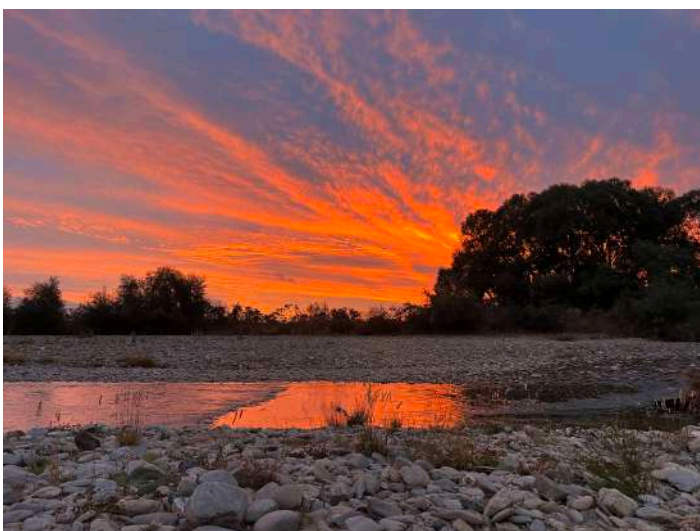
Double rainbow over the Maniototo rural landscape on 11 January 2026. One of those moments that makes you stop, smile, and enjoy where you are. Captured by Amanda Cheesmur.



Naseby Swimming Dam. An absolutely amazing spot for all ages and abilities, perfect for paddling, swimming, or just soaking it all in. A must see and do over summer. Source: Naseby Forest Recreation Area F.Book page.



Big skies towards the Styx, where the sky does most of the talking. Captured by Debbie Paterson.



Kyeburn River in January, showing off just how beautiful Central Otago evenings can be. Captured by Liane Crutchley.

WIN A \$50 VOUCHER!

Show Off Your Slice of Mānīatoto Life! 🐾 🌿

Got a curious kitten, a laughing magpie, a blooming garden, or a DIY project you're proud of? Maybe a great snap of friends or whānau out and about in the Mānīatoto? We'd love to see it! Send us your best pics - pets, gardens, projects, or local moments. Each month, our favourite photo wins a **\$50 voucher** to spend at **your local BuildLink Maniototo Hardware & Garden Store**.

Let's celebrate the people, pets, and projects that make the Mānīatoto special.



Tell us who is in the picture, plus any other relevant details. Photos need to be sent as high resolution jpegs via email.

Send your photos to:

Email: positivelymaniototo@gmail.com

BuildLink Maniototo
Buy Better Build Better Hardware & Garden



Playcentre

RANFURLY

MĀNIATOTO PLAYGROUP

Summer session times

9.30-11.30, Tuesday and Friday

For children aged 0-6.
Sessions are free

Feel free to contact us beforehand
or just turn up to one of our sessions.



Kid's Activity Timetable

Month	Dates	Activity	Additional Info
February	3rd & 6th	Building blocks	Waitangi Day Friday 6th
February	10th & 13th	Animal bathtime (covered deck)	Visit from Kaimahi Jo on Friday
February	17th & 20th	Bikes, trikes & tractors (outside)	125th Anniversary Show • A&P Show Wednesday 18th
February	24th & 27th	Mini artists (painting)	
March	3rd & 6th	Digging for treasure (sandpit)	
March	10th & 13th	Water play (outside)	
March	17th & 20th	Story time (outdoors/indoors)	
March	24th & 27th	Music & movement	
March/April	31st & 3rd	Easter crafts	

Current Committee:

- Chloë Rosser – chairperson
- Maddy Ready – focused on welcoming new families
- Marissa Pont – also on the Plunket committee
- Jo Rodriguez-Quesada – Kaimahi (admin)

Contact us: ranfurly@playcentre.org.nz

[Ranfurlly Playcentre - Māniatoto playgroup](#)