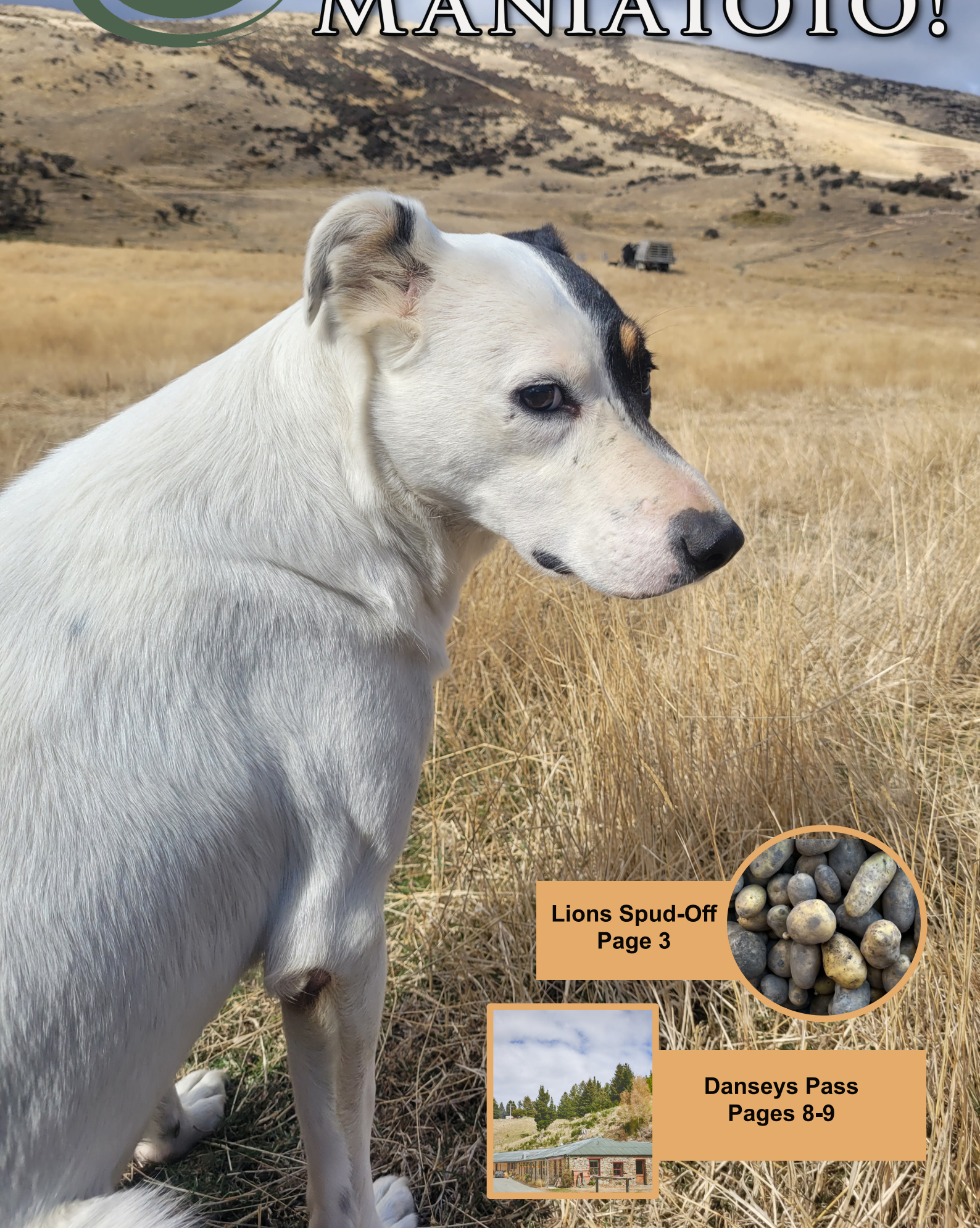




Positively

May 2025

MĀNIATOTO!



Lions Spud-Off
Page 3



Danseys Pass
Pages 8-9

FROM THE EDITOR'S DESK

Celebrating All Kinds of Mums This Mother's Day!

Mother's Day gives us a chance to pause, take a breath, and acknowledge the women who help shape the rhythm and spirit of our lives - whether they're raising kids, wrangling animals, or simply showing up with love in all the ways that matter.

Here in the Mānīatoto, "mum" can mean all sorts of things. She might be the one cheering from the sidelines at the local sports field, making sure the helmets are on tight at the family bike ride, or packing snacks for a day out on the trails. She could be bottle-feeding a lamb, coaching netball, or teaching the grandkids how to ride without training wheels.

Mothering doesn't come with a rulebook - or a finish line. It's found in the little things: the text that says, "drive safe," the lunch that magically appears in the middle of a busy day, or the quiet way she keeps everyone moving forward when things feel wobbly. And of course, it helps to keep a sense of humour handy. What did the mama tomato say to the baby tomato? Catch up!

In a place like the Mānīatoto, where community matters, we see mothering not just in homes, but across paddocks, classrooms, and community halls. It lives in the hearts of aunties, neighbours, mentors, and mates who step in with a helping hand or a listening ear. We celebrate all of you - the ones who nurture, support, guide, and grow others - whatever your title may be.

We also take a quiet moment to remember the mothers of our heritage and lineage - those no longer with us, but still present in our lives through memory, character, and the values they passed down. Their influence continues to shape our families, our farms, and our futures.

So, from all of us at Positively Mānīatoto, thank you.

Happy Mother's Day – your kindness and strength are woven into the very heart of our region.

James and Erica

A big congratulations to Karen Brady - the lucky winner of our one-toto April Positively Mānīatoto Signed Book Giveaway!



Front page image - Dot takes in the view at the Kyeburn Dog Trials. With 110 years of history unfolding on the hill ahead, it's a spectacular spot to sit, watch, and take it all in. Event held 15-16 March 2025. Image supplied by Stacey Hore. See pages 20-21 for more.

DUCK HUNTING SEASON OPENS IN THE MĀNIATOTO!

It's that time of year again - the opening weekend of duck hunting season in the Mānīatoto! Hunters are gearing up, licences are sorted, and the waders are ready to go. Safety is top priority, so make sure firearms are secure, everyone knows the drill, and you've brushed up on duck identification.

There's always that one mate who reckons they've perfected the best duck call - and whether it sounds like a mallard or a kazoo, it's all part of the fun. The Mānīatoto wetlands come alive with the crack of dawn, the chatter of excited hunters, and the hope of bagging a few birds for the pot.

Behind many great duck hunters is a great partner - whether they're enjoying a peaceful weekend to themselves, helping with meals back at the hut, or joining in around the campfire, their support adds to the spirit of the season.

So, here's to early mornings, muddy boots, and a few good yarns in the maimai. Happy duck hunting, Mānīatoto - keep it safe, keep it fun, and enjoy every moment.

Two statistician buddies went duck hunting.

One of them took aim and fired, missing the duck by three inches to the left. The other statistician took his turn and missed the duck by three inches to the right.

After arguing for a while about who missed, they decided to put their heads together to solve the problem. Suddenly, one of them had a bright idea: "Hey, what if we add up our errors and divide by two? Maybe that'll give us a better idea of where to aim!"

So they did just that, and to their delight, they discovered that when they combined their misses, they had hit the duck dead centre!



THE GREAT MANIOTOTO SPUD-OFF:



Written by: James Valentine

Community, Competition, and a Whole Lot of Potatoes!

If you've been wondering where the biggest, heaviest, and possibly most pampered potatoes in the Maniototo have been hiding - look no further than the Maniototo Lions' annual Spud Competition. I caught up with George Lindsay, President of the Maniototo Lions, to dig up the details on this quirky and much-loved fundraiser.

Digging for a Good Cause

"The Spud Competition is just one of our many fundraisers," George explained, "and this year all proceeds are going to the Maniototo Early Settlers Museum in Naseby." From planting to harvest, it's a light-hearted way for locals to come together, get their hands dirty, and grow some serious support for the community.

Big Spuds, Bigger Bragging Rights

The final dig took place on April 13, 2025, and the results were impressive!

Heaviest Shaws (combined spud weight from one plant):

1st	John McMillan	8.2kg
2nd	Audrey Graham	5.18kg
3rd	Bradley Shaw	4.98kg

Heaviest Individual Spud:

1st	Natalie Bruhns	0.80kg
-----	----------------	--------

Most of the competitors grew their spuds in open ground, and while the exact soil secrets are hush-hush, George suspects "a good mix of manure, maybe a bit of seaweed, and definitely plenty of water." The star variety this year? The ever-reliable Agria, known for both size and flavour.

From Spud to Sale

So what happens to all the potatoes after the competition? "We try to sell them," said George. "This year, we were lucky - Stringer Shearing Ltd in Ranfurly offered to take them off our hands, which added a few more dollars to our donation total."

A Bit of Fun in Every Plot

There's no shortage of laughs in the competition either. This year's best story came from Dave Cromb, whose promising potato patch was tragically repurposed by the family cat as a toilet! Better luck next year, Dave.

A Community Effort

Though this is only the second year that the Maniototo

Lions have run the event (picking up the spud baton from the Pakeke Lions), George and fellow organiser Jeff Shaw have been overwhelmed by the support from locals. "We sell the seed potatoes right across the Maniototo," said George. "It's a fun competition, and families really get into it."

Looking Ahead

The Maniototo Lions are already planning their next meeting, happening 8th May 2025 at the Ranfurly Bowling Club. "We've got a strong club, but we're always looking for new members," George added. "If anyone's keen, just come along or have a chat with a Lions member."

A huge thank you to this year's competition sponsor: Farmlands.

With good soil, great laughs, and even better community spirit, the Maniototo Lions' Spud Competition is a perfect reminder that even the humblest of vegetables can bring people together for something truly special.



Need personal, non-biased insurance advice for...

Your farm or business? Your home and contents? Your life and health? Your income protection?

OFS Insurance Brokers are locally owned and managed insurance specialists offering personal advice and a no obligation chat about your insurance needs.

Call Hunter today.



Hunter Stevenson

Insurance Broker

p: (03) 471 6800

m: 027 438 1288

e: hunter@ofs.nz

Spiced Duck with Wedges & Baby Carrots

Crispy duck, tender veg, and a fragrant, punchy broth—this one-pan wonder delivers big flavour with minimal fuss.

Ingredients:

2 duck legs, 2 fluffy potatoes (wedged), 200g baby carrots, 10 shallots (or 1 red onion, halved)

Cooking liquid: 1 tsp Chinese five spice, ½ tsp ground star anise, 1 tbsp soy sauce, juice and peel of 1 orange, 1 tsp honey, 1 red chilli (halved) or flakes, 2 bay leaves

Method:

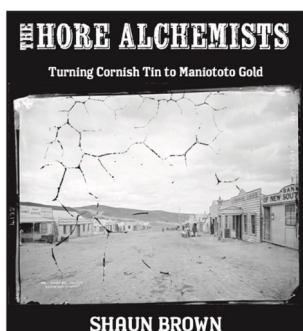
Brown duck skin-side down. Arrange duck, veg, and wedges in a baking dish. Pour over combined cooking liquid. Cover and roast at 180°C for 1 hr, then uncover and cook 20 mins more. Finish with fresh coriander.

One pan, endless satisfaction.



NEW BOOK PROVIDES AN INTIMATE PORTRAYAL OF CENTRAL OTAGO HISTORY

Stories of personal experience illuminate history in a way



that no weighty analysis of policies and events ever can. In *The Hore Alchemists*, to be released in May, author Shaun Brown uses the personal stories of a group of Maniototo pioneers to provide a rare and intimate view of the history of the region.

The central characters in the book come from two large Cornish tin-mining families, closely related and both bearing the surname Hore, whose ancestors, for at least 300 years, had worked the tin on the isolated moor they called home. In the 1860s, both families were suddenly hollowed out when no less than 14 offspring answered the siren call of gold down under. Almost all came to Otago, chasing the gold rushes from one discovery to the next, ending up on the Highburn (Naseby), Kyeburn and Hamiltons goldfields. They may have intended to return to Cornwall, but few did.

The author's painstaking investigation into the motives, achievements and sacrifices of these pioneers reveals their lives in raw and sometimes uncomfortable detail. "Their

stories are both inspiring and heartbreaking, often at the same time. You can't help but be in awe of their determination and tenacity, sometimes in the face of the most harrowing of circumstances. Once I discovered these stories I was compelled to make sure they remained hidden no longer."



Naseby characters in 1870

The subsequent generations married into other founding families, Inder, Howell and Tregonning, and together they formed the cornerstone of early Maniototo settlement. Through their experiences, the book charts the transition from mining camps to permanent settlements built around farming. "It was gold that lured them here, but it was land that made them stay," says Shaun Brown.

The families that stayed launched farming dynasties and started businesses, without ever abandoning the hope of discovering more gold. That expectation led to some desperate gambles, including on the sham gold rush at Nenthorn that crushed the ambitions of so many Maniototo entrepreneurs.

The author's intimate close up view of history is enriched by the inclusion of 90 illustrations including a number of old photographs of the district published for the first time.

The book traverses the challenging years from the gold rush to after World War I. "The war years were particularly tough", says Shaun Brown. "The young men of the district rushed to enlist, fearful not of the dangers of war, but of missing out on a glorious adventure. The individual experiences recounted in the book demonstrate what a tragic miscalculation that was."

But for all the tragedies and sacrifices, Shaun Brown regards his book as a journal of triumph, of extraordinary achievement. "I often reflect on how dramatically the lives of these pioneers and their descendants were transformed by their bold gamble to chase the gold. How could a young man labouring in the Cornish clay pits ever envisage that he would one day be a landowner and successful businessman and that his son would create a chain of jewellery stores that has become the largest in Australasia? And then there's the two cousins, one digging clay the other working tin, who couldn't possibly imagine the status two of their descendants would acquire



when they became All Blacks.

“But it’s not just these lofty examples that testify to the successful future these pioneers created for their descendants. Throughout Otago and across the nation thousands of New Zealanders can trace their relative prosperity back to the courage

and tenacity of these forebears. I hope my book helps them recognise and value the gift their ancestors gave them.”

All are welcome to the book launch to be held at the Waipiata Country Hotel on Sunday, May 11 at 2 pm. Copies of the book will be available (RRP \$50 cash) and the author will take part in a Q&A session to be presented by broadcaster, author and local historian, Jim Sullivan.

The book will also be available at selected booksellers and online through nationwidebooks.co.nz.

Shaun Brown worked as journalist and broadcaster with the ABC, NZBC, TVNZ, BBC and, most recently, with the Australian television network SBS where, until his retirement in 2011, he was managing director. Among the most memorable of his reporting assignments was on board the frigate HMNZS Otago in 1973, dispatched by Prime Minister Norman Kirk to protest against French nuclear testing at Mururoa Atoll. He watched from the bridge as the nuclear device was detonated and, along with the entire crew, was later awarded the New Zealand Special Service Medal. He and his family now live in Sydney.

CHALLENGE

Ranfurly

SAVE 6c per LITRE

With your *My Challenge Card*

Keep an eye out for our 15c discount days!

Super Gold card holders get 10c per litre discount.

Also Farmlands card holders get 12c per litre off.

You'll also earn 1 point for every \$1 you spend*, which you can redeem for rewards in store.

* Excluding purchases of cigarettes, Points expire 2 years from the date the relevant points were awarded. Full terms and conditions available at www.mychallenge.co.nz.

Workshop

WOFs, auto-electrical, scanning,
tyres, servicing and repairs.

(03) 444 9011

**COMMUNITY TRUST OF MANIOTOTO and
MANIOTOTO TRUST FUND**

Invite funding applications from:

- ✓ Individuals, or community groups within the Maniototo
- ✓ Projects must have clear benefits for the Maniototo Community

For queries about the funding scheme or assistance filling in your application contact:

Janice Remnant (Asset Management Team
Leader - Property)
Ranfurly Service Centre
Telephone: (03) 262 8502

Application forms available from:
Ranfurly Service Centre
15 Pery Street
Ranfurly
email: janice.remnant@codc.govt.nz

Or on www.codc.govt.nz

Applications close: **Friday 4.00pm on 23 May 2025**

Local domestic electrician
Call Andrew on 027 266 3906
ask.one.earth@gmail.com

Correction & Apology – A Legacy of Care: Pauline Stringer’s Farewell

We sincerely apologise for errors in the article A Legacy of Care: Pauline Stringer’s Farewell in the last edition of Positively Māniatoto.

Pauline is also retiring from her Well Child position, which was not mentioned. Additionally, her husband’s name is Eric, not Geoff, and Eric was born in the Maniototo and has been running the family farm, rather than moving here. We regret these inaccuracies and appreciate the community’s feedback. Pauline’s contribution to rural healthcare is immense, and we are grateful for the opportunity to celebrate her remarkable career.

BURN RADIO UPDATE



Colouring, Quizzes, and Calling All Future Radio Stars!

What a colourful Easter we had! Our Easter Colouring Competition brought out some seriously impressive artistic flair – thank you to everyone who entered! It was nearly impossible to choose winners with so many masterpieces, but after some very serious judging (and a few debates over crayon technique), we're thrilled to announce the results:

- 0–4 Years: Sophia Becker.
- 5–8 Years: Bryleigh Barroga.
- 9–12 Years: Florence Dowling.
- 12–15 Years: Brodie McAtamney.
- 16 and Over: Crickets... apparently adults prefer chocolate to colouring.
- Most Creative: Briella Graham.



We love celebrating creativity in all its forms - and speaking of creativity, how about trying your hand at

radio? That's right, we're on the hunt for volunteers to join the Burn Radio team! Never touched a microphone. No problem! We provide full training, support, and all the coffee you can drink (within reason). If you're passionate about music, local happenings, or just enjoy a good yarn - this is your chance.

Got an event coming up? A garage sale? A new business opening? A lost duck? Burn Radio can help spread the word. From community notices to affordable advertising, we're your local megaphone for Mānīatoto. Get in touch - we'll make sure your message is heard far and wide.

And finally, don't forget our daily quiz question, every weekday around 11:40am. Get the answer right and you're in the draw for a \$20 4 Square voucher - drawn fortnightly.

Stay tuned to Burn Radio - your station for local info, good banter, and tunes that make the day better.

Written by: James Valentine

Burn Radio Keeping it live & local!

Healthcare Directory

IN AN EMERGENCY, CALL 111

- Ranfurly Medical Centre.....(03) 444 1073
- Maniototo Health Services.....(03) 444 9420
- MHS Physio.....extn 53121
- Maniototo Pharmacy.....(03) 444 9111
- Peter Dick Optometrist.....(03) 444 9111
- Alice Lindemann Hearing.....0800 727 484
- Central Dental.....(03) 448 8159
- Lisa Denny Physiotherapist.....(03) 448 6688
- Podiatrist Deb Cookson022 419 9011
- Healthline.....0800 611 116
- Wax Out (ear wax removal)027 419 6463
- Rural Support Trust 0800 787 254
- Ka Ora Health (after hours telehealth service - charges may apply)0800 252 672

Free call or text 1737 any time to talk to a trained counsellor

ASSISTED DYEING IN THE MANIOTOTO

Written by: Helen Temby

On Friday 21st March, the Maniototo Spinners and Weavers group assisted eight people to dye – and it wasn't painful at all!

All it took were two electric fry pans, two pots on hotplates, some dye, carded wool, and a bit of friendly expertise.

Members created a range of multicoloured wool fleece, which will later be spun and knitted into vibrant garments.

So, if you'd like some assistance to dye - or better still, to live creatively - why not visit the Maniototo Spinners and Weavers group? You'll find friendly encouragement to spin, knit, weave, felt and, of course, dye.

To find out more, contact Helen (027 333 1267) or Karen (03 444 9814).



(Above photo) The process.
(Below photo) The result.



PGG Wrightson Real Estate

REACH OUT TO YOUR LOCAL AGENTS

for a confidential chat about your Real Estate needs.

RURAL, LIFESTYLE & RESIDENTIAL SALES



Shane Turfus

021 246 6383

shane.turfus@pggwrightson.co.nz

Scan the QR code with phone camera to view our listings



Sally Taylor

027 346 7986

sally.taylor@pggwrightson.co.nz



pggwre.co.nz

PGG Wrightson Real Estate Limited, licensed under the REAA 2008.



**AUTOMOTIVE
MACHINERY
ENGINEERING**

AUTOMOTIVE DIVISION

- + Car/Ute WoF just \$79
- + Car servicing from \$230
- + SUV servicing from \$280
- + Ute servicing from \$300
- + Timing belt replacements
- + Brake repairs
- + Tyres and puncture repairs

Book today! 021 190 8187

andy@aem.net.nz | www.aem.net.nz

8 MITCHELL ST, RANFURLY 9332

TICKETS ON SALE NOW

THE WAIATA THEATRE PRODUCTIONS
PRODUCTION OF

**THE HUNCHBACK
OF NOTRE DAME**

A NEW MUSICAL
BASED ON THE VICTOR HUGO NOVEL
AND SONGS FROM THE DISNEY FILM

MUSIC BY ALAN MENKEN LYRICS BY STEPHEN SCHWARTZ BOOK BY PETER PARNELL

CLYDE MEMORIAL THEATRE | APRIL - MAY 2025

LICENSED EXCLUSIVELY BY MUSIC THEATRE INTERNATIONAL (AUSTRALASIA).



SCAN ME

TICKETS AVAILABLE ON ITICKET.CO.NZ

waiatatheatreproductions.com



MERINO • SUFFOLK
SINCE 2009
**FOULDEN HILL
GENETICS**
SANTA GERTRUDIS • HEREFORD




**Bull Sale
23rd May**

706 Moonlight Road, Middlemarch

11am Start

- ✓ Growth
- ✓ Carcass Traits
- ✓ Calving Ease
- ✓ Temperment
- ✓ Fertility

Contact Us
Will Gibson: 0274360237



Foulden Hill Genetics

DANSEYS PASS – A PLACE STEEPED IN HISTORY

Source: Matty Hawkes

Tucked deep within the Kyeburn Diggings, Danseys Pass has a colourful past dating back to the Central Otago gold rush. Located roughly 23km from Naseby and 64km from Oamaru, this scenic mountain route - named after William Heywood Dansey, a North Otago run holder and early explorer of the region - winds through terrain once home to more than 2,000 hopeful gold miners from across the world.



The early 1860s marked a period of fervent gold prospecting in Otago. In May 1863, gold was first discovered in the Naseby area, leading to a rush of miners prospecting the surrounding regions. By July 1863, Samuel Clark and Nicholas Goyan discovered gold on the saddle between Mt Buster and Mt Kyeburn, approximately eight miles from Kyeburn Diggings, prompting a significant influx of prospectors. In 1861, gold was discovered at Upper Kyeburn by prospector William Leggatt. When prospector Leggatt discovered the gold, it triggered a rush that saw miners, merchants, and adventurers transform this remote spot into a vibrant settlement.



By 1863, the gold rush had extended to Mount Buster, leading to the rapid development of a bustling frontier settlement at Kyeburn Diggings. By 1870, the community boasted three hotels, three stores, a butchery, and a bakery. The area was also known for its six unlicensed “grog shanties.” Entertainment likely included horse races, minstrel shows, and holiday gatherings. A significant Chinese community had established camps in the area, with approximately 600 miners by 1880, and operated their own store near German Creek, which remained until 1920.



The area earned the nickname “The Insolvency Court,” thanks to the fortune-seekers who either struck it rich or passed through broke. The land bears their stories still - from tales of tragic avalanches and sly-grog fines to stories of resilience and multicultural camaraderie.

Some of the most dramatic changes to the land came from the labour of Chinese miners, who hand-dug deep cuttings through the schist landscape - including the still-visible

“Chinaman’s Cutting.” Trees planted by early miners in the otherwise barren hills still stand, such as the redwood up German Creek. The remaining clumps of trees and stone ruins still whisper stories of the past. A sobering reminder of the area’s dangers lies in the nearby Kyeburn Diggings cemetery, which includes a memorial to the victims of New Zealand’s first recorded avalanche fatalities in 1891.

Danseys Pass Hotel – Since 1862



At the heart of this history sits the Danseys Pass Hotel, built in 1862 by stonemason William “Happy Bill” Swain, who was famously paid a pint of beer for every schist boulder he laid. His solid stonework still forms the heart of the hotel, which stands proudly at 2,000 feet above sea level.

Originally built to serve miners and travellers, the hotel has weathered fierce winters. Ownership of the hotel passed through several hands over the decades - from Edwin George, who held the original license, to the Monks, Moynihans, and Carrs - each adding their own legacy. Despite changing times, the hotel has retained its character, drawing in those seeking history, scenery, and old-fashioned southern hospitality in this rugged setting.



Today, the hotel features 18 double bedrooms spread across the historic building and a purpose-built lodge. It’s a perfect base for singles, couples, families, and tour groups exploring the Otago high country. Visitors can enjoy hearty meals prepared by skilled chefs, sample local wines and beers at the bar, and share stories by the fire

after a day exploring the hills.

The hotel is also a popular venue for weddings, conferences, special celebrations, and private events. Guests come not just for the comfort and cuisine, but for the sense of connection to a rich, storied landscape.

Danseys Today

Whether you're visiting for the history, the mountain views, or a getaway off the beaten track, Danseys Pass offers a uniquely authentic experience. It's a place where the echoes of the gold rush still linger in the stone walls, windswept tussock, and stories shared by the fire.

Matthew and Kirsty Hawkes took over the Danseys Pass Hotel operation in the winter of 2023. On the back of their successful re-launch of the Bealey Hotel in Arthur's Pass, Matty and Kirsty set their sights on a new challenge. Matty, with his eye on the property, leaves Kirsty in the kitchen to wow guests with fresh, clean local food.



Kirsty, who grew up on a sheep farm in Central Southland, developed a deep appreciation early on for the hard work behind New Zealand's famous lamb exports. Though she has only been cooking professionally for the last decade, with the support of husband Matty and father-in-law Graham Hawkes (a well-known Southland chef of more than 60 years), she has crafted a simple yet elevated menu for the Danseys Pass dining room, showcasing the best of the south.



Her approach to honest, fresh food has quickly become a highlight of the Danseys experience. A prime example is the Lamb Wellington - the hotel's signature dish - perfected after a year of experimenting with different lamb cuts, condiments, pastry, and sauces. The result has been wowing guests for the last six months.

If you're looking for a truly special dining experience or have a reason to celebrate, come and experience Kirsty's passion on a plate at the Danseys Pass Hotel.



Reservations are required.

So come for a meal, a night, or a weekend - and experience a little piece of Otago gold country, where time slows down and history breathes in the mountain air.

EST.  1862

DANSEYS PASS
HOTEL

www.danseypass.co.nz 03 444 9048

POLICE UPDATE

Kia ora everyone,

It has been a busy few weeks for us, and at the time of writing this, Easter



is looming. I hope everyone had a safe Easter and opening of the duck shooting season. There have been five drink drivers caught, one of whom was four to five times over the limit. Remember that all the hotels have courtesy coaches that can help you get to your loved ones safely, or even take you to another hotel, which also has a courtesy coach. Use them!

Over my career, I have tried to continue with the directive of Education, Encouragement, and then Enforcement. When I arrived here in the Mānīatoto over three years ago, I took a couple of pieces of great advice from my previous colleague, Senior Constable Jaco Pieterse. He said that generally, his message to this community is:

1. Don't drink and drive.
2. Keep your hands to yourself.
3. If it's not yours, don't touch/take/borrow it.

Today, I'm reiterating these messages. I have spent a considerable amount of time investigating theft of firewood, water, and other easily accessible resources that one party doesn't own but another has taken. Search warrants and production orders on phones are time-consuming, and that time should be better spent doing other things - like keeping your children and family safe - rather than reading your reams of text messages to each other.

I have also been dealing with some animosity in relation to specific groups in the Mānīatoto. I'll remind you that it is not an offence to think what you do but keep it to yourself - because as soon as you put it in writing or verbalise it, others can make a complaint. If you have a complaint, come to Police and make a formal complaint. If you are going to send unsigned, threatening letters littered with false allegations, then I will end up investigating you

instead of what you initially intended.

I recently had the good fortune to sit with members of the RSA selling poppies on the corner of Pery Street and Charlemont Street. It was commented - and previously recognised by me - that this is a dangerous corner. I have had three near misses there where cars have pulled out without checking. The education is that if you are distracted on the phone, you may cause a crash. If you park on yellow lines outside the 4 Square, others can't see you coming or see children crossing. That is why they are there. The encouragement is: please don't do it anymore, as you may be a party to someone being injured or seriously hurt. Let's hope there is no need for enforcement.

Ranfurly Police has been lucky enough to receive a heart defibrillator, and we will receive this in the next couple of months for the patrol car. It is something one never wants to use, but it is always great when there is one there. Watch this space.

If you need to get in touch with me or need assistance, there are a few ways. If it is an emergency or if offenders are still present, then ring 111. If it is non-urgent, ring 105 - they will record the event and get in touch with me.

Equally, you can call me on 021 922 416 or email aoi699@police.govt.nz. If I can take your call, I will - but I may be on a day off.

Be safe, be kind, and look after one another.

Senior Constable Jess Owens, Ranfurly Police.

Gilchrist store

Main Road | Oturehua



John & Helen Hellier

www.gilchriststore.co.nz

P (03) 444 5808 E shop@gilchriststore.co.nz

Opening Hours: Monday to Friday 8am – 5 pm;
Saturdays 8am – 2 pm; and Sundays 10am – 2pm

New Zealand's Longest continuous General Store Business - 125 years



Naseby Holiday Park

Not just a campground!

Open all year with a range of accommodation to suit everyone, including two and three bedroom cottages, cabins, powered, non-powered and self-contained sites.

Check out our website for more details and specials! www.nasebyHP.nz or phone (03) 444 9904

Your Contributions

We welcome your submissions for consideration in PositivelyMānīatoto! Send in short articles (200–300 words), milestones, events, history, recipes, poems, photos, ads, or anything of local interest. Deadline: 15th of each month.

Classified Advertising

Submit classified ads, calendar entries, or articles with photos for consideration to positivelymaniototo@gmail.com by the 15th. Contact us for ad sizes and costs.

Contact Us

Radio Charity, trading as Burn 729AM, produces Positively Mānīatoto and provides live on-air communication. Donations are welcome - get in touch!

Email: positivelymaniototo@gmail.com

DIGGING IN: THE GARDEN CLUB

Written by: Maggie

What a great summer we've had in the garden! Rainfall has been, if not plentiful, at least adequate to give the hose a rest. A few good downpours make all the difference.



As the season winds down towards winter, the intense reds, oranges, and golds of autumn leaves, combined with late-flowering perennials, still provide plenty of colour.

Now is an ideal time to split any perennial clumps that have grown too large or are flowering less. This can be achieved by digging out the clump, shaking off excess soil, and cutting it into sections with an axe - or alternatively, by placing two garden forks back-to-back and prising the clump apart into two or more sections. Always ensure each section has plenty of healthy root. There is still time for replanted sections to make some growth before becoming dormant for winter.

The proposal by CODC to increase water charges is causing some anxiety among ratepayers, so it might be worth considering ways of reducing water use in the garden to ease the impact of an increase. Creating a garden of plants that can withstand dry conditions is one possible choice, and there are plenty to choose from in this category.

Installing a storage tank to capture rainwater from the roof is another useful option. Improving the water-retentive quality of the soil by incorporating plenty of humus, then covering the surface with a thick layer of mulch to reduce water loss through evaporation, is also beneficial.

Don't forget to keep applying liquid feed to winter vegetables to keep them growing strongly.

Aotea

- Residential Electrical
- Industrial Electrical
- Commercial Electrical
- Agricultural Electrical
- Air Conditioning
- Home Automation
- Communications
- Audio Visual
- Appliance Repair
- Tool Repair
- Test & Tag

Connect with us
027 665 3552
aoteagroup.nz
maniototo@aoteaelectric.co.nz

Ranfurly • Omakau • Naseby • Ida Valley • Lauder

MANIOTOTO CONTRACTING

(2004) Ltd

HAY • BALEAGE • CULTIVATION
DRILLING • SILAGE • HARVESTING
FERT SPREADING • GENERAL CARTAGE

Ian & Judy Hore

106 Alexander Street, Ranfurly
Office: 03 976 8599 • Ian: 027 221 9803
E: ian.maniototo@gmail.com

EST. 2015

MANIOTOTO

C A F E

Wholesome Food & Delicious Coffee

AEM AUTOMOTIVE MACHINERY ENGINEERING

MACHINERY DIVISION

- Tractor servicing. Case/New Holland
- Machinery servicing. CAT, Hitachi, Komatsu, all makes
- Farm implement servicing
- Hydraulic repairs
- Hydraulic ram rebuilds
- Tractor transmission repairs

Book today! 021 190 8187 MOBILE SERVICE
andy@aem.net.nz | www.aem.net.nz
8 MITCHELL ST, RANFURLY 9332

Checketts McKay Law

Gillian Clarke
Senior Associate

Bridget Becker
Legal Assistant

Marilyn Ede
Legal Assistant

ranfurly@cmlaw.co.nz
CALL NOW 03 444 9060
or visit
www.cmlaw.co.nz

PLEASE NOTE THE RANFURLY OFFICE IS OPEN
MONDAY, TUESDAY & FRIDAY 9.00AM-5.00PM AND
WEDNESDAY & THURSDAY 9.00AM-3.00PM

Your Local Supporters.



May 2025

Sun	Mon	Tue	Wed	Thu	Fri	Sat
<p>4</p> <p>-Presbyterian Church, 10am -Catholic Mass, 4pm -Anglican Parish, 10.30am -Naseby Golf, 10.30am-12.30pm 🌱 MAY THE 4TH B WITH U</p>	<p>5</p> <p>-Pilates, MAS, 5pm -Scrap booking & card making, Art Centre 10.30am -Dance Classes, Arts Centre, 3pm</p>	<p>6</p> <p>-Ranfurly Playcentre, 9.30am-11.30am -Steady As You Go, Stadium rugby rooms 10.30am -Maniototo Golf, Ladies, 11am & 9 hole 12.30pm -Scrabble & cards, Hospital 1.30pm</p>	<p>7</p> <p>-Op Shop, 10.30am-4.30pm -Tai chi, Arts Centre 10am -Embroidery Guild, Arts Centre, 10am</p>	<p>8</p> <p>-Pilates, MAS GYM 5pm -Ballet, Arts Centre 3pm</p>	<p>9</p> <p>-Op Shop, 10.30am-4.30pm -Ranfurly Playcentre, 9.30am-11.30am -Kids Art Club, Presbyterian Church, 3.10pm-4.30pm</p>	<p>10</p> <p>-Maniototo Golf, 12.45pm -Rugby, Maniototo vs Arrowtown – Maniototo Park Stadium, 2.30pm</p>
<p>11</p> <p>MOTHER'S DAY -Presbyterian Church, 10am -Catholic Mass, 4pm -Naseby Golf, 10.30am-12.30pm -Toy Library, 11am-12pm</p>	<p>12</p> <p>-Pilates, MAS, 5pm -Scrap booking & card making, Art Centre 10.30am -Dance Classes, Arts Centre, 3pm -Spinners, Weavers, Knitting Group, Arts Centre 10am</p>	<p>13</p> <p>-Ranfurly Playcentre, 9.30am-11.30am -Steady As You Go, Stadium rugby rooms 10.30am -Maniototo Golf, Ladies, 11am & 9 hole 12.30pm -Scrabble & cards, Hospital 1.30pm -Pottery, Arts Centre 6.30pm</p>	<p>14</p> <p>-Op Shop, 10.30am-4.30pm -Tai chi, Arts Centre 10am -Embroidery Guild, Arts Centre, 10am</p>	<p>15</p> <p>-Pilates, MAS GYM 5pm -Ballet, Arts Centre 3pm -Toy Library 3.15pm-4.15pm</p>	<p>16</p> <p>-Op Shop, 10.30am-4.30pm -Ranfurly Playcentre, 9.30am-11.30am -Kids Art Club, Presbyterian Church, 3.10pm-4.30pm</p>	<p>17</p> <p>-Maniototo Golf, 12.45pm -Rugby, Upper Clutha vs Maniototo – Wanaka Domain, 2.30pm</p>
<p>18</p> <p>-Presbyterian Church, 10am -Catholic Mass, 4pm -Naseby Golf, 10.30am-12.30pm</p>	<p>19</p> <p>-Pilates, MAS, 5pm -Scrap booking & card making, Art Centre 10.30am -Dance Classes, Arts Centre, 3pm</p>	<p>20</p> <p>-Ranfurly Playcentre, 9.30am-11.30am -Steady As You Go, Stadium rugby rooms 10.30am -Maniototo Golf, Ladies, 11am & 9 hole 12.30pm -Scrabble & cards, Hospital 1.30pm</p>	<p>21</p> <p>-Op Shop, 10.30am-4.30pm -Tai chi, Arts Centre 10am -Embroidery Guild, Arts Centre, 10am</p>	<p>22</p> <p>-Pilates, MAS GYM 5pm -Ballet, Arts Centre 3pm</p>	<p>23</p> <p>-Op Shop, 10.30am-4.30pm -Ranfurly Playcentre, 9.30am-11.30am -Kids Art Club, Presbyterian Church, 3.10pm-4.30pm</p>	<p>24</p> <p>-Maniototo Golf, 12.45pm -Rugby, Maniototo vs Cromwell Goats – Maniototo Park Stadium, 2.30pm</p>
<p>25</p> <p>-Presbyterian Church, 10am -Catholic Mass, 4pm -Naseby Golf, 10.30am-12.30pm -Toy Library, 11am-12pm</p>	<p>26</p> <p>-Pilates, MAS, 5pm -Scrap booking & card making, Art Centre 10.30am -Dance Classes, Arts Centre, 3pm -Spinners, Weavers, Knitting Group, Arts Centre 10am</p>	<p>27</p> <p>-Ranfurly Playcentre, 9.30am-11.30am -Steady As You Go, Stadium rugby rooms 10.30am -Maniototo Golf, Ladies, 11am & 9 hole 12.30pm -Scrabble & cards, Hospital 1.30pm -Pottery, Arts Centre 6.30pm</p>	<p>28</p> <p>-Op Shop, 10.30am-4.30pm -Tai chi, Arts Centre 10am -Embroidery Guild, Arts Centre, 10am</p>	<p>29</p> <p>-Pilates, MAS GYM 5pm -Ballet, Arts Centre 3pm -Toy Library 3.15pm-4.15pm</p>	<p>30</p> <p>-Op Shop, 10.30am-4.30pm -Ranfurly Playcentre, 9.30am-11.30am -Kids Art Club, Presbyterian Church, 3.10pm-4.30pm</p>	<p>31</p> <p>-Maniototo Golf, 12.45pm</p>



Sun	Mon	Tue	Wed	Thu	Fri	Sat
<p>1</p> <p>-Presbyterian Church, 10am -Catholic Mass, 4pm -Anglican Parish, 10.30am -Naseby Golf, 10.30am-12.30pm</p>	<p>2</p> <p>KING'S BIRTHDAY</p>	<p>3</p> <p>-Ranfurly Playcentre, 9.30am-11.30am -Steady As You Go, Stadium rugby rooms 10.30am -Maniototo Golf, Ladies, 11am & 9 hole 12.30pm -Scrabble & cards, Hospital 1.30pm</p>	<p>4</p> <p>-Op Shop, 10.30am-4.30pm -Tai chi, Arts Centre 10am -Embroidery Guild, Arts Centre, 10am</p>	<p>5</p> <p>-Pilates, MAS GYM 5pm -Ballet, Arts Centre 3pm</p>	<p>6</p> <p>-Op Shop 10.30am-4.30pm -Ranfurly Playcentre, 9.30am-11.30am -Kids Art Club, Presbyterian Church, 3.10pm-4.30pm</p>	<p>7</p> <p>-Maniototo Golf, 12.45pm</p>
<p>8</p> <p>-Presbyterian Church, 10am -Catholic Mass, 4pm -Naseby Golf, 10.30am-12.30pm -Toy Library, 11am-12pm</p>	<p>9</p> <p>-Pilates, MAS, 5pm -Scrap booking & card making, Art Centre 10.30am -Dance Classes, Arts Centre, 3pm -Spinners, Weavers, Knitting Group, Arts Centre 10am</p>	<p>10</p> <p>-Ranfurly Playcentre, 9.30am-11.30am -Steady As You Go, Stadium rugby rooms 10.30am -Maniototo Golf, Ladies, 11am & 9 hole 12.30pm -Scrabble & cards, Hospital 1.30pm -Pottery, Arts Centre 6.30pm</p>	<p>11</p> <p>-Op Shop, 10.30am-4.30pm -Tai chi, Arts Centre 10am -Embroidery Guild, Arts Centre, 10am</p>	<p>12</p> <p>-Pilates, MAS GYM 5pm -Ballet, Arts Centre 3pm -Toy Library 3.15pm-4.15pm</p>	<p>13</p> <p>-Op Shop, 10.30am-4.30pm -Ranfurly Playcentre, 9.30am-11.30am -Kids Art Club, Presbyterian Church, 3.10pm-4.30pm</p>	<p>14</p> <p>-Maniototo Golf, 12.45pm -Rugby, Wakatipu vs Maniototo – Qtown Rec 1, 2.30pm</p>
<p>15</p> <p>-Presbyterian Church, 10am -Catholic Mass, 4pm -Naseby Golf, 10.30am-12.30pm</p>	<p>16</p> <p>-Pilates, MAS, 5pm -Scrap booking & card making, Art Centre 10.30am -Dance Classes, Arts Centre, 3pm</p>	<p>17</p> <p>-Ranfurly Playcentre, 9.30am-11.30am -Steady As You Go, Stadium rugby rooms 10.30am -Maniototo Golf, Ladies, 11am & 9 hole 12.30pm -Scrabble & cards, Hospital 1.30pm</p>	<p>18</p> <p>-Op Shop, 10.30am-4.30pm -Tai chi, Arts Centre 10am -Embroidery Guild, Arts Centre, 10am</p>	<p>19</p> <p>-Pilates, MAS GYM 5pm -Ballet, Arts Centre 3pm</p>	<p>20</p> <p>MATARIKI</p>	<p>21</p> <p>-Maniototo Golf, 12.45pm -Rugby, Maniototo vs Alexandra – Maniototo Park Stadium 1, 2.30pm</p>
<p>22</p> <p>-Presbyterian Church, 10am -Catholic Mass, 4pm -Naseby Golf, 10.30am-12.30pm -Toy Library, 11am-12pm</p>	<p>23</p> <p>-Pilates, MAS, 5pm -Scrap booking & card making, Art Centre 10.30am -Dance Classes, Arts Centre, 3pm -Spinners, Weavers, Knitting Group, Arts Centre 10am</p>	<p>24</p> <p>-Ranfurly Playcentre, 9.30am-11.30am -Steady As You Go, Stadium rugby rooms 10.30am -Maniototo Golf, Ladies, 11am & 9 hole 12.30pm -Scrabble & cards, Hospital 1.30pm -Pottery, Arts Centre 6.30pm</p>	<p>25</p> <p>-Op Shop, 10.30am-4.30pm -Tai chi, Arts Centre 10am -Embroidery Guild, Arts Centre, 10am</p>	<p>26</p> <p>-Pilates, MAS GYM 5pm -Ballet, Arts Centre 3pm -Toy Library, 3.15pm-4.15pm</p>	<p>27</p> <p>TERM 2 ENDS -Op Shop, 10.30am-4.30pm -Ranfurly Playcentre, 9.30am-11.30am -Kids Art Club, Presbyterian Church, 3.10pm-4.30pm</p>	<p>28</p> <p>-Maniototo Golf, 12.45pm -Rugby, Maniototo vs Malakanui – Maniototo Park Stadium 1, 2.30pm</p>
<p>29</p> <p>-Presbyterian Church, 10am -Catholic Mass, 4pm -Naseby Golf, 10.30am-12.30pm</p>	<p>30</p> <p>-Pilates, MAS, 5pm -Scrap booking & card making, Art Centre 10.30am -Dance Classes, Arts Centre, 3pm</p>					

FORWARD PLANNING

June	King's Birthday observed (2 nd), NZ Curling Mixed Doubles (11-15th June), Matariki (Friday 20 th), Naseby Lights on Ice Dance Party (20th), NZ Curling Nationals (25-29th), Ice Camp (starts 30th), Ida Valley Winter Art Show (Thurs 19 th 7pm) (Sun 22 nd 5pm),
July	Naseby Ice Camp continues until 4 th ,
August	Daffodil Day (Thurs 21 st), The Great Naseby Water Race (27 th 8am)
September	Father's Day (Sun 7 th), Daylight Saving (28 th), Alexandra Blossom Festival (26 th , 27 th , 28 th)
October	Labour Weekend Markets (Sat 25 th), Labour Day (Mon 27 th),
December	Ranfurly Late Night Shopping, Lions Steptoe Auction,
January 2026	Burn Radio Pool Party, Otago/Taieri A&P Society (24 th - 25 th),
Febuary	Palmerston/Waihemo A&P Show (7 th &8 th) Maniototo A&P Show (11 th),

COMMUNITY CONTACTS:

Below are contacts for this issues calender.

Ballet and Contemporary Dance

Melissa 021 220 8655

Catholic Women's Fellowship - Opportunity Shop

Francie (03) 444 9243

Embroidery Guild

Diane (03) 444 9831

Jazz & Contemporary Dance

Brit 021 239 7345

Kids' Art Club

Rowena 027 259 2320

Maniototo Golf Club

Mark 027 423 911

Naseby Golf Club

Jacqui 021 220 0310

Patearoa Golf Club

Derek 027 626 4730

Ranfurly Bowling Club

Maureen 027 067 375

Patearoa Bowling Club

Doreen 027 490 970

Pilates:

Barb 021 165 4872

Ranfurly Karate Club

Diane (03) 444 9831

Scrap booking and cardmaking

Sandra 027 847 5643

Scrabble & Cards

Helen 027 333 1267

Spinning, Knitting & Weaving

Helen 027 333 1267

The Pottery Club Maniototo

Nina 027 271 3399

Steady As You Go

Joan (03) 444 9629

Tai Chi (03) 444 9831

If you'd like included or to change details please email positivelymaniototo@gmail.com

HEAVY EQUIPMENT DIESEL MECHANICS

*Proud to support the
community we live in*

Paul Bain
027 253 1137
paul@mcer.co.nz
www.mcer.co.nz



4 FOUR SQUARE SUPERMARKET

MANIOTOTO

Ph: 03 444 9021 • E: maniototo@foursquare-si.co.nz
1 Pery St, Ranfurly (opp. information centre)
Proudly operated by Martin and Michelle Grundy

- Fresh meat, fruit and vegetables
- General stores • NZ Post Agent
- Extensive beer and wine selection





Unifone

RURAL AND URBAN INTERNET, MOBILE AND PHONE

FIBRE
PLANS FROM

\$60

/ month*

WI-FI
PLANS FROM

\$99

/ month*

MOBILE
PLANS FROM

\$45

/ month*

HOLIDAY HOME
PLANS FROM

\$35

/ month*

SHED
PLANS FROM

\$29

/ month*

UNIFONE COVER: Alexandra, Clyde, Omakau,
Lauder, Ida Valley, Moa Creek, Oturehua, Ranfurly,
Kyeburn, Waipiata, Hyde, Paerau, Styx Creek,
Middlemarch and more!

0800 894 114 unifone.nz

CONNECT WITH CONFIDENCE

*Terms and conditions apply.

TERM 1

We have had a busy term one here at St John's School.

On the 28th of February, students participated in the Lohi Fashion Show. Senior students repurposed denim clothing from the Op Shop. The students worked in small groups designing, collecting materials from the Op Shop and then explaining their ideas with Tania Murray from Lohi. Tania then transformed these ideas on paper, into wearable, and practical pieces of art.



Our annual swimming sports were held on the 4th of March.



On Friday, 14th March, our students took part in the honey extraction process from our Holy Paddocks beehives. This was led by Anna and Rob McSkimming. Each class had time to watch, ask questions, have a turn at spinning the honey and then have a taste!





INNOVATIVE ENGINEERING SOLUTIONS

Based in the heart of rural Otago, Cen Eng is your trusted partner in engineering innovation.

Specialising in developing innovative solutions we design and manufacture a wide range of products for agricultural and energy industries right here in Omakau. Our technical services team also provides water metering, control and telemetry services on a farm level trough to design and project management of large scale engineering projects in construction, infrastructure, energy and mining.

Contact us to discover how our engineering solutions can support Innovation in your operation.

Cen Eng Limited
03 4473 757
www.ceneng.co.nz
66 Leask Street Omakau



WAIHIATA COUNTRY HOTEL

Owners Mark and Nikki welcome you

<p style="text-align: center; font-weight: bold;">FRIDAY NIGHT MEAL DEALS From \$12</p>	<p style="text-align: center; font-weight: bold;">Sirloin steak and chips Snapper and chips <i>(both served with salad)</i> Gourmet pizzas</p>
---	--

PH 444 9470



Ranfurly Playcentre - Māniatoto Playgroup update

Kia ora, welcome!

We are a parent-run branch of Playcentre, focused on creating a welcoming and supportive community environment.

We are open Tuesdays and Fridays, 9:30am - 11:30am, during the school term, for ages 0–6 years.

From painting, crafts, water/messy play, music and dancing to books, dress-ups, lots of toys, and a fantastic outdoor playground and sandpit - we've got something for everyone.



Come for part of the session or stay for the whole thing. Bring a snack for the little ones, coffee or tea is provided for you and enjoy a friendly chit-chat with fellow parents and caregivers.



Check out our Facebook page: "Ranfurly Playcentre - Māniatoto Playgroup" for event details, updates, and to contact us about hiring the centre for birthday parties or celebrations.

Jade Atherton Plumbing Ltd

We have a Ranfurly based Plumber/Gasfitter

- Gas Hot Water Conversions
- Repairs and Maintenance
- Renovations/Alterations
- New Builds

Please contact us by phone, e-mail or via our website

M: 021 664 408 P: 03 447 3333
E: jade.atherton@gmail.com
W: www.jadeathertonplumbing.co.nz

GRAHAM ELECTRICAL LTD

Contracting, appliance sales and service since 1954

Shop 444 9314 Doug 027 438 8380
Rob 027 447 8627 Nic 027 330 4605

grahamelectrical@xtra.co.nz

FUJITSU Haier

Fujitsu and Haier air conditioning
Fisher & Paykel Appliances, Panasonic TVs

OPEN FIRE SEASON: STAY SAFE WHILE YOU BURN

Written by: James Valentine

As we head into the cooler months, Fire and Emergency New Zealand has announced a shift to open fire season for Central Otago, Queenstown Lakes, and the Alpine Zone, including areas like Glenorchy and the Matukituki Valley.



This means that fire permits are no longer required for open-air burning in most parts of the region. However, Fire and Emergency Risk Reduction Advisor Mark Mawhinney reminds the community that this is not a green light to become complacent.

“Just because we’re in an open fire season doesn’t mean the risk is gone,” says Mark. “There are still zones within Central Otago and Queenstown Lakes that remain restricted all year round, and Naseby is one of them.”

Know Before You Light

Before you strike that match, visit the Fire and Emergency New Zealand website - specifically the ‘Check It’s Alright’ tool (www.checkitsalright.nz). Simply type in your address and you’ll be told exactly what you can and can’t do when it comes to outdoor burning in your area.

This tool is updated regularly and considers local conditions, restrictions, and safety advice, ensuring that you’re burning legally and responsibly.

Safe Burning Tips

Mark offered a few key tips for those planning-controlled burns:

- Check the weather forecast - especially for afternoon winds, which can quickly escalate a safe fire into a dangerous one.
- Always monitor your fire - never leave it unattended.
- Extinguish thoroughly - don’t assume your fire is out just because the flames are gone. Fires can smoulder for days, particularly if large logs, stumps or deep ash piles are involved.
- Flood the area with water and stir the ashes to expose any hot spots. If it’s a large pile, dig it over and drench it well.

“We’ve seen several fires re-ignite days later due to strong winds stirring up hidden embers,” says Mark. “That top layer of ash can act like a blanket, insulating hot material

underneath. It only takes a gust of wind to stir it up and bring it back to life.”

A Season of Opportunity - and Responsibility

The move to open fire season reflects the current weather conditions and reduced fire risk, but that doesn’t mean mistakes won’t happen. Mark encourages everyone to treat every burn with respect.

“We’ve got acceptable conditions now, but that doesn’t mean things can’t go wrong. It’s still important to burn responsibly.”

For more guidance on safe burning practices and current fire season updates, head to www.checkitsalright.nz or visit the Fire and Emergency New Zealand website.

Stay safe, plan, and remember - a little caution now can prevent a whole lot of trouble later.

ORC reminds communities to burn dry firewood this winter

Air quality becomes degraded during winter due to the use of wood burners combined with cold calm weather, and the occurrence of inversion layers. Always make sure the wood you are burning is dry. It’s better for you, your home, and the environment.

Burn Dry, Breathe Easy tips:

- Stock up on firewood before Christmas to allow it to dry out before the following winter
- Stack your firewood off the ground, out of the rain and with plenty of airflow so it dries faster
- Use a wood moisture meter to check if your firewood is dry enough to burn. Less than 25% moisture means more heat and reduced smoke
- A well-built fire of scrunched up paper/firelighters, kindling, and firewood with plenty of airflow ensures a well-heated home and less smoke
- Don’t burn wet or green firewood, treated wood or household rubbish as they can release harmful toxins into the air.
- To reduce smoke overnight, make sure you can still see flames when you turn your fire down.

Find out more at orc.govt.nz/burndry

0800 474 082



Gallaway Cook Allan is a premier Otago-based full service law firm.

Contact Devon Miller for all your Private Client needs:

- Wills and Enduring Powers of Attorney;
- Estate administration;
- Relationship Property; and
- Trusts and Asset Protection.



03 474 9790

devon.miller@gallawaycookallan.co.nz

www.gallawaycookallan.co.nz

GALLAWAY
COOK
ALLAN
LAWYERS

RANFURLY POOL 2024/2025 SEASON

Thank you everyone for a fantastic and positive season this year! We opened on 30 November 2024 and have just wrapped up on 27 April 2025. It's been an awesome few months with good numbers through the gate.

We had a couple of challenges along the way (including chlorine hiccups and a burst water pipe on the main street!), but these were far outweighed by the highlights. Some of our favourites included being part of the Christmas late night shopping night with a BBQ and some fizz for all, the annual Billy Laing swim lessons, Plunket swim lessons, school swimming lessons and sports carnivals (those were some noisy afternoons!), the Burn pool party, our Waitangi Day pool party (yes, more BBQ and fizz!), and finishing off with an Easter Egg hunt during the holidays - we're pretty sure a few staff might've snuck a chocolate or two as well!

From all of us at the pool - Amy, Zoe, Brooke, Sam, Abby, Emma, Colin and myself - a huge thank you for your support, kind words and feedback over the season. It's been brilliant to see so many people coming through and making the most of this great facility.

We can't wait to welcome you all back - and hopefully a few new faces too - next season!

Thank you

Sarah,
Ranfurlly Pool Team Leader.



From the lifeguard team (pictured, Zoe) and big thanks to the community.

ICL
CHARTERED ACCOUNTANTS

Focus on your future

11 Charlemont Street, Ranfurly, Central Otago
Tel: (03) 444 9158, enquiries@iclca.co.nz, www.iclca.co.nz

Mānīatoto Community Support Hub

A place where people can connect, find help and access free services

On the last Thursday of each month, we will be in your community, if you would like to see us you can drop into the Hub space being provided at the Ranfurly Medical Centre between 10am-1pm

Free and Confidential Services that will be there are:

- Family Works: Financial mentor
- Cancer society
- Age Concern
- Work and Income
- Catholic Social Services

Upcoming dates:
May 29th, June 26th

*For more information, please contact
Alexandra Community House on 03 440 0740*

Ear Micro-suction Clinic

Monday 26th May
Maniototo Hospital
Cost \$50 adults
\$40 child/student
For appointment phone
Ruth O'Neill
027-419-6463

CLAAS

BUILT TO WORK

TORION WHEEL LOADER
Reliable, powerful, and ready for any task.
CLAAS TORION and SCORPION deliver unmatched productivity on every task. **Keen? Let's talk!**

SCORPION TELEHANDLER

RANFURLY
16 Mitchell Street
Duncan Nicolson 027 252 5574

CLAAS
Harvest Centre

KYEBURN DOG TRIALS

Written by: Stacey Hore

Dog trials are a real baa-rillicant test of teamwork, where dogs and their owners work together to prove they've got wool-d class talent!

The Kyeburn Dog Trials first started in 1915, and we have been holding this must-attend agricultural event every year since. This March, we celebrated 110 years of showcasing the incredible partnership between farmers and their best mates - their dogs.

Whether it's the noisy huntaways pushing the sheep uphill or the clever heading dogs guiding them downhill and through obstacles, it's always an impressive display of shear talent.

We had great results from competitors who travelled from far and wide to run their dogs. The weather was outstanding, and the Kyeburn and surrounding communities enjoyed catching up over a beer and BBQ. It's a family event, and the kids always have a blast at the clubhouse.

As with any event like this, it wouldn't be possible without our amazing helpers, club members, sponsors, sheep owners, judges, and landowners. All these people take the time to support our trials, and we couldn't be more thankful.

We'd love to see more locals enter a dog and give the trials a go! We are always on the lookout for new club members keen to be part of this rich history. See you all next year!



KYEBURN DOG TRIALS – Results Summary 25th & 26th March

Event One – Long Head

1st: Greg Metherell with dog *Note* - 98 points

Event Two – Short Head and Yard

1st: Barry Hobbs with dog *Emma* - 94.5 points

Event Three – Zig Zag Hunt

1st: Lloyd Smith with dog *Jerry* - 96 points

Event Four – Straight Hunt

1st: Lloyd Smith with dog *Jerry* - 96.5 points

For extended results, refer to the Kyeburn Dog Trial Club Facebook page.

DRAFT DESIGNS UNVEILED FOR RANFURLY WELCOME SIGNS

Written by: Janyne Fletcher

The Ranfurly Welcome Signage Committee is excited to share the draft concept designs for two new signs that will mark the entrances to Ranfurly, celebrating the town's rich identity, heritage, and spirit.

Following public consultation held in June and July 2024, which included input from residents, community groups, and school children, a clear message emerged: Rail is at the heart of Ranfurly. From the town's founding roots in the railway to its connection with the Otago Central Rail Trail, the railway theme strongly resonated across all generations. In response to this feedback, the committee has developed a concept that is simple, clean, and timeless.

Proposed Locations

Two identical signs are proposed for the following locations on SH85:

- South Entrance: Between Goff Road and Welles Street (coming from Alexandra)
- North Entrance: Between Knox Street and Welles Street (coming from Palmerston)

Design Concept

The signs will be vertical in format, constructed using durable, low-maintenance materials such as railway iron, hardwood, and corten steel. Each sign will visually echo a section of railway track, with solid cut metal letters spelling "Ranfurly" mounted on the edge of each "sleeper."

Key elements include:

- Message: A clear and welcoming message – "You have arrived at Ranfurly."

- Form: Vertical orientation symbolising progress and growth.
- Materials & Palette: Chosen for strength, resilience, and a connection to the land and town's heritage.
- Size: Each sign will stand approximately 4.5 to 5 meters tall
- Location Suitability: Both sites offer excellent visibility with clear sightlines and minimal signage clutter.
- Lighting: Non-reflective materials are being used, and lighting options are currently under review.

Next Steps

The committee is entering the next stage of community consultation, which includes sharing the draft design publicly and hosting drop-in sessions to gather feedback. All input will be carefully reviewed before finalising the design and seeking necessary consents from NZTA and the Central Otago District Council. Once approved, the project will move into the detailed design and construction phase. Additional funding will be sought to complement funds raised through the Ranfurly 125 celebrations.

About the Committee

The Welcome Signage Project is being led by a dedicated group of residents who represent a cross-section of the Ranfurly community: Becky Bruhns, Becky McAuley, Janyne Fletcher, Kristina Wills, Nikki Meyer, Peter Jones, and Richard Smith.



FIRST AID COURSES

RANFURLY—MAY 2025



FIRST AID LEVEL 1

13 May 2025 8.30am—5.00pm

FIRST AID REFRESHER

14 May 2025 9.30am—4.00pm

PLEASE BOOK BY: Calling: 0800 FIRST AID (0800 347 782)
OR email: glenis.riach@stjohn.org.nz

TIME FOR SUNSHINE & SAVINGS

View all offers and book
a free in-home consultation
at russellscurtains.co.nz



*Terms and conditions apply



**AUTOMOTIVE
MACHINERY
ENGINEERING**

ENGINEERING DIVISION

- ✦ Mobile welding service
- ✦ Steel & alloy repairs
- ✦ Custom farm gates
- ✦ Pivot gates from \$1,050 + gst
- ✦ Heavy duty flat decks from \$5,500 + gst
- ✦ Certified welders AS/NZS 1554.1:2014
- ✦ Mobile hydraulic hose service

Call today! 021 190 8187

andy@aem.net.nz | www.aem.net.nz
8 MITCHELL ST, RANFURLY 9332

Gallaway Cook Allan is a premier Otago-based full service law firm.

Contact Nathan Adams or Tom Willis for all your Agribusiness needs:

- Farm conveyancing;
- Property related work including Subdivisions, Leases and Easements;
- Succession Planning; and
- Corporate work including syndicates.



03 474 6725
nathan.adams@
gallawaycookallan.co.nz



03 474 9785
tom.willis@
gallawaycookallan.co.nz

GALLAWAY
COOK
ALLAN
LAWYERS

www.gallawaycookallan.co.nz

CASE OF THE MONTH

Retained Placenta:

Written by: Vanessa Love

This month I thought I'd talk about retained membranes or placentas in mares. After birth a mare should drop her placenta within three hours, holding onto it for longer than this is a problem.

Approximately 2-10% of mares get retained placentas requiring intervention. This foaling season the Ranfurly clinic saw five mares with retained membranes. I don't know the exact number of horses giving birth here each year, but I doubt it's close to 50, let alone 250 if a 2% incidence was occurring!

Mares can get very sick and potentially die if it is left attached, or if even a small portion is inside her, this is much more dangerous as we often don't know it's there. Therefore, once it comes out even on its own it is very important that it is thoroughly checked for missing pieces. They are an 'F' shape, with a big top of the F where the foal was growing and a smaller bit which sat in the non-pregnant side of the uterus, this is the piece most retained. Mares with foaling difficulties and mares who go over the expected gestation time are more likely to have a retained membrane.

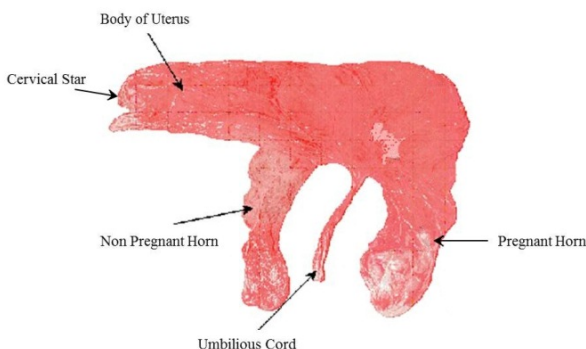
If your horses' membranes have not expelled three hours after birth, you can start to give oxytocin to encourage uterine contractions to push it out. If after eight to twelve hours, it is still there the mare needs a vet visit including preventative antibiotics and anti-inflammatories. It is very important not to pull on the membrane as it can cause it to tear.

Interestingly, cows can have a retained membrane for up to nine days and be just fine.

For most of our retained membrane cases this year oxytocin administration intravenously and gently coaxing it out did the trick, a couple needed fluids given through the blood vessels of the placenta to loosen it.

Happily, all affected mares did great, and their foals are also doing really well.

The below photos from a google search show the normal shape of the equine placenta and what a retained placenta looks like when it's fresh and stuck.



Ranfurly
Veterinary Centre
by the Big Blue Cross

Your animal health professionals
looking after all your pets and farm animals!

BEST BRANDS
We've got what
you need when you
need it ... backed
with the very best
veterinary advice!

03 444 1020

www.vet11.co.nz




PARKER

EARTH MOVING

027 512 4677

Civil Construction &
Farm Services

www.parkerearthmoving.com







MOUNT IDA SYNDICATE: BELL TENT

Written by: Amie Pont

Positively Māniatoto continues our series on the history of high-country farming in the north-eastern corner of the Māniatoto, where the Hawkdun, Mt Ida, and St Mary ranges interlope...

Firstly, we begin by acknowledging a couple of details. When discussing these high country 'runs', we refer to the Mt Ida Syndicate (Runs 362B - 362C), established in 1897, and the Soldiers Syndicate (Run 573), created post-war when land became available for returned servicemen.

Stock was moved up-country for the summer and brought back down in the autumn. This method involved several days and nights away, and over the decades, various forms of 'accommodation' were used.

Before two original syndicate huts - built of timber and tin - were constructed, a First World War tent was used. Made by J McGrath and Son (who still operate in Dunedin today), this 'bell tent' (pictured below) was shared by both the Soldiers Syndicate and the neighbouring Mt Ida Syndicate until the 1930s.



Tent-dwelling musterers took off their wet clothes at night, put them under their swags, and slept on them to dry them enough to wear again the next morning. Eight or nine men would sleep with their feet pointed toward the central pole - the only way they could all fit inside.

One frosty morning, the bell tent was frozen stiff and couldn't be rolled up. It was draped over a mule and, as the story goes, they were halfway down the Buster Track before it thawed out.

The original tent still exists today and was used in the first Cavalcade from Rocklands to Cromwell in 1991 by Jock Scott.

Next edition: Blue Duck, Long Promise, Soldiers Hilton etc.

MEET THE GIRLS - A NEW COLLECTION

Last year, homeware manufacturer Ashdene Australia contacted Patearoa artist Julie Greig to commission her to paint Friesian dairy cows for a new range they had planned. Julie didn't need to go far to find ideal models in the valley, resulting in several paintings based on Ashdene's design requirements. The range was released in late February and is already selling out, with many items being reordered. Julie hopes to have stock in her studio at some point, but for now, it's best to contact www.ashdene.com.au and look for the "Meet the Girls" range to order. This is the third time Ashdene and Julie have worked together. For more of Julie's paintings and details of the Ranfurly soft pastel classes she teaches, visit www.juliegreig.co.nz.



AWARD-WINNING ART!

'Patearoa artist Julie Greig is delighted to share that her pastel painting, 'Takahē, Orokonui Ecosanctuary' won the Master Circle Section of Pastel Artists of NZ National exhibition currently showing at Central Stories Gallery, Alexandra.






Fundraising for Jake Smith Cull cow drive.

Just chat with your local agent, and they'll handle everything for you.




A huge thank you to
Ryan Dowling (PGG),
Marcus Sutherland (SSF),
Todd Dundass (Rural Livestock)
Shaun Tauti (Alliance)
 for their incredible support.

This drive will run until the end of the year





Positively MĀNIATOTO! OUT AND ABOUT



Ranfurly, April 2025 – Fourteen adventure bikes make a striking stop outside Māniatoto Four Square, midway through an unforgettable off-road journey with Ultimate Adventure Moto NZ. Off the beaten track, deep in the heart of the Māniatoto.



Hannah McAtamney and Nathan Huddleston were married in a beautiful ceremony, officiated by Jenny MacDonald of Pātearoa. Image by: Captured Moments Photography.



Briar Duncan tackling the legendary Northburn 100 on Northburn Station, a rugged sheep and beef farm in Cromwell, NZ. With three brutal loops (50km, 60km, 50km) and nearly 10,000 metres of vertical gain, the 100-mile course is one of the toughest trail challenges in the country — and Briar took it on. March 22, 2025.



Julie Hall from Otago Peninsular, Beryl Marshall from Middlemarch, and their trusty steeds (with Shadow, of course) saddle up for an Autumn road ride through the Māniatoto - this time, off to visit Jock Scott in Kyeburn.



Sean Becker with his trusty dogs Baz (black and tan) and Tip, scanning for ewes beneath the watchful rise of Kakanui Peak - northeast of Highway 85, over the back of the mighty Kakanui Mountains.

Show Off Your Slice of Māniatoto Life! 🐾 🌿

Got a curious kitten, a laughing magpie, a blooming garden, or a DIY project you're proud of? Maybe a great snap of friends or whānau out and about in the Māniatoto? We'd love to see it! Send us your best pics - pets, gardens, projects, or local moments. Each month, our favourite photo wins a **\$50 voucher** to spend at **your local BuildLink Maniototo Hardware & Garden Store**.

Let's celebrate the people, pets, and projects that make the Māniatoto special.



Tell us who is in the picture, plus any other relevant details. Photos need to be sent as high resolution jpegs via email.

Send your photos to:

Email: positivelymaniototo@gmail.com

